



Ultimate & Pro Series Knuckle Hardware Kit Instructions

General Description

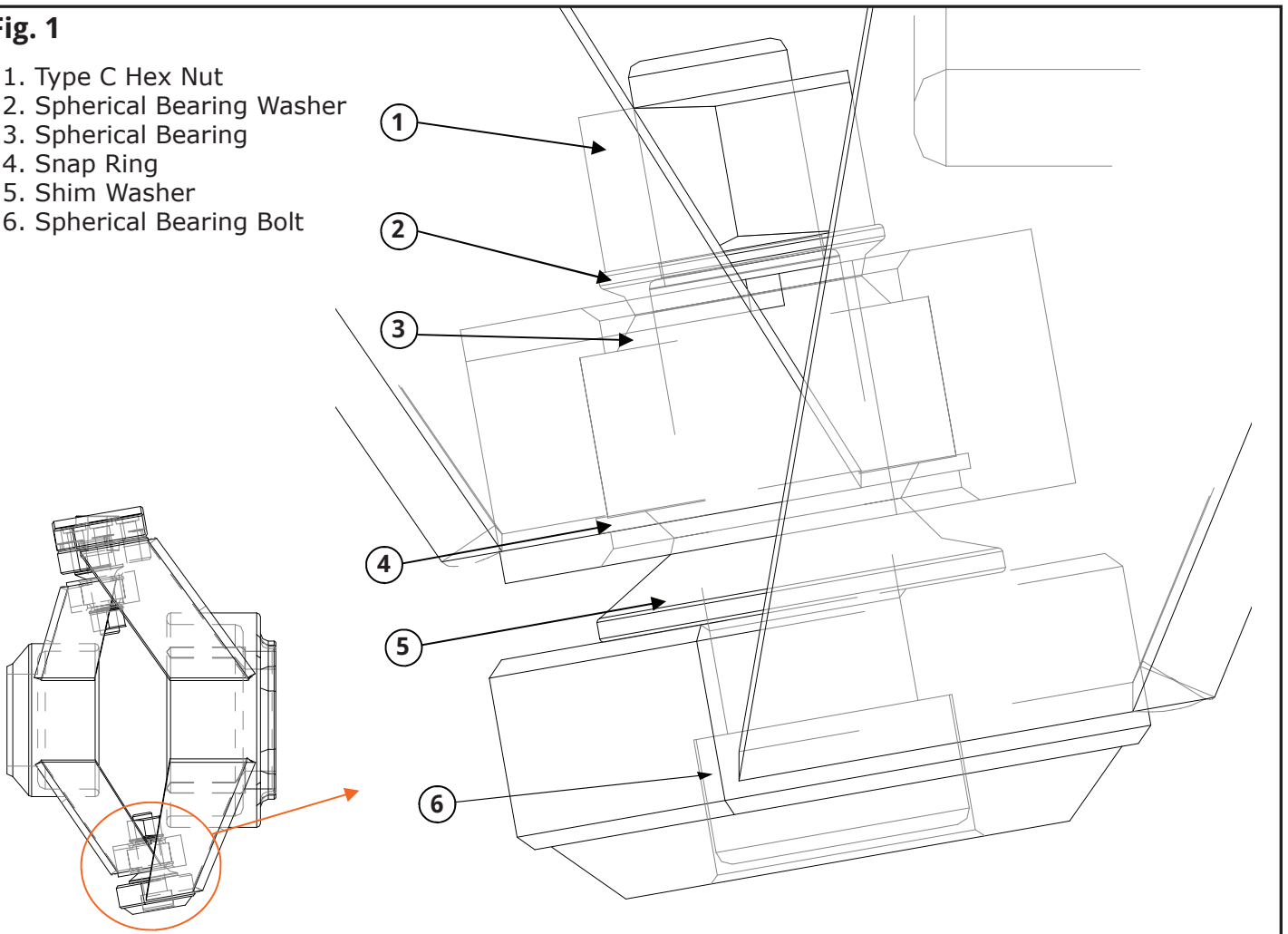
The Spidertrax Ultimate Knuckle Hardware Kit and Pro Series Knuckle Hardware Kit comes with all the hardware necessary to assemble inner and outer Spidertrax knuckles. In addition, this kit includes all hardware necessary to install a Spidertrax Ultimate Unit Bearing to the outer knuckle. Some tips for hardware installation:

1. Figure 1 details the hardware orientation for the knuckle assembly.
2. **Apply anti-seize to Spherical Bearing Bolt threads, to prevent thread damage from Type C Hex Nut.**
3. Each shim washer thickness is identified by a number of cut rings around its base. To install, start with the largest thickness shim washer on the top bearing (the one with the most rings), put the spherical bearing bolt in place (do not tighten yet), then fit the largest thickness shim washer you can on the bottom bearing. It helps to "swing" the outer knuckle in place, pivoting about the top bearing, when installing the bottom shim washer. After tightening down both spherical bearing bolts with the type c hex nuts, you should still be able to turn the outer knuckle by hand. If the outer knuckle cannot be turned by hand, try installing a larger thickness shim washer.

Spidertrax Disclaimers & Warranty Card is located on the back of these instructions.

Fig. 1

1. Type C Hex Nut
2. Spherical Bearing Washer
3. Spherical Bearing
4. Snap Ring
5. Shim Washer
6. Spherical Bearing Bolt





SPIDERTRAX
OFF-ROAD

Disclaimers & Warranty

WARNING

INSTALLATION OF ANY COMPONENT OR SYSTEM SHOULD ONLY BE PERFORMED BY THOSE EXPERIENCED IN AUTOMOTIVE MECHANICS AND PROCEDURES.

Spidertrax warrants only to the original purchaser that all products will be free from defects in materials and workmanship. The foregoing warranty is subject to the proper installation, operation and maintenance of the product in accordance with the installation instructions supplied. Warranty claims must be made by the purchaser in writing within 30 days of the manifestation of a problem and purchaser must present acceptable proof of original ownership (such as copy of original receipt). Spidertrax reserves the right, before having any obligation under this Limited Lifetime Warranty, to inspect the damaged product and all costs of shipping the product to Spidertrax for inspection shall be borne solely by the purchaser. Spidertrax's sole obligation under the foregoing warranty is, at Spidertrax's option, to repair, replace or correct any such defect that was present at the time of delivery. The foregoing warranty is not transferable to another party and does not apply to any purchaser who bought the product from a reseller or distributor not authorized by Spidertrax.

FOR OFF-ROAD USE ONLY

DRIVE THE VEHICLE UNDER CONTROLLED CONDITIONS TO ENSURE PROPER INSTALLATION OF COMPONENTS. GRADUALLY WORK UP TO FOUR WHEELING SPEEDS.



Knuckle Hardware Installation Instructions

ISTLSBCSB001-10