



PSM-001 - INSTRUCTIONS

SPIDERTRAX PRP SEAT MOUNT KIT - SAMURAI

GENERAL DESCRIPTION

The Spidertrax PRP Seat Mount Kit is a bolt-on product designed to easily install PRP Roadster Seats in your Suzuki Samurai. What makes this kit unique is the addition of brand new seat brackets and slide rails, making old worn out OEM sliders and mounts a thing of the past. Each kit comes complete with new seat mounts, sliders, and all hardware necessary for the install. PRP Roadster Seats sold separately.

WHAT'S INCLUDED

- Driver Seat Bracket (x1)
- Passenger Seat Bracket (x1)
- Passenger Reinforcement Plates (x4)

- PRP Slider Bracket Kit (x2)
- 3/8" x 1" Button Head Bolt (x8)
- 3/8" Grade 8 Hex Nut (x8)
- 3/8" Lock Washer (x8)
- 5/16" Type C Hex Nut (x8)
- 5/16" Flat Washer (x8)

- M8x1.25-25mm Hex Bolt (x4)
- M8x1.25-30mm Hex Bolt (x4)
- M8 Flat Washer (x8)
- M8 Lock Washer (x8)
- 3/8" x 2" Fender Washer (x2)
- M8x1.25 Hex Nut (x2)

RECOMMENDED TOOLS

- 3/8" Ratchet
- 1/2" Deep Socket
- 9/16" Deep Socket
- 13mm Deep Socket
- 13mm Standard Socket
- 13mm Wrench
- 7/32" Hex Key
- Pliers
- Wire Cutter
- 3/8" Hand Drill

PRP SEAT & SLIDE RAIL ASSEMBLY

This section will detail the installation of the PRP Roadster seats to the PRP Slider Bracket Kit.

1. Locate PRP Slider Bracket Kit. Using 3/8" x 1" button head bolts with 3/8" lock washers and 3/8" hex nuts, install angle brackets to PRP Roadster seat using orientation shown in **Fig. 1** & **Fig. 2**. Tighten bolts with 7/32" hex key and 9/16" deep socket.



Fig. 1



Fig. 2

2

- Using carriage bolts & hex nuts included with PRP Slider Bracket Kit, install sliders in orientation shown in **Fig. 3** & **Fig 4**. Carriage bolts fit into square holes on angle bracket. Slider position may need to be moved forward/backward to fit hex nuts inside slider. Tighten hex nuts with 1/2" deep socket.



Fig. 3

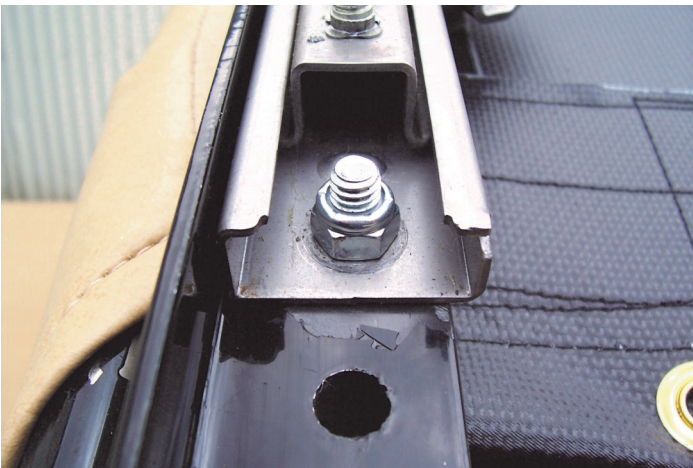


Fig. 4

- Install connecting linkage between sliders using orientation shown in **Fig. 5**. Connecting linkage is oversized and needs trimming with wire cutters to fit. Using pliers, crimp connecting linkage ends onto slider to secure install. Be sure connecting linkage is not pulling on slide rails in rest position.

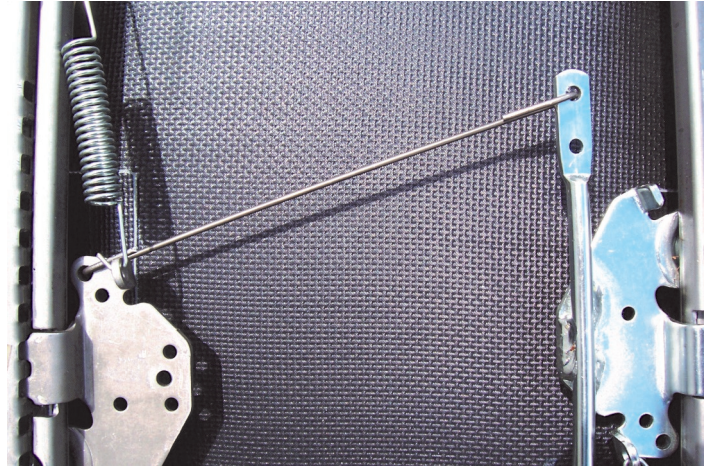


Fig. 5

- Repeat steps 1-3 for second seat.

DRIVER SEAT INSTALLATION

This section will detail the installation of the driver's side PRP seat to vehicle.

- Using 5/16" type C hex nuts & 5/16" flat washers, install PRP seat & slide rail assembly to Driver Seat Bracket as shown in **Fig. 6** & **Fig. 7**. Tighten nuts with 1/2" deep socket.

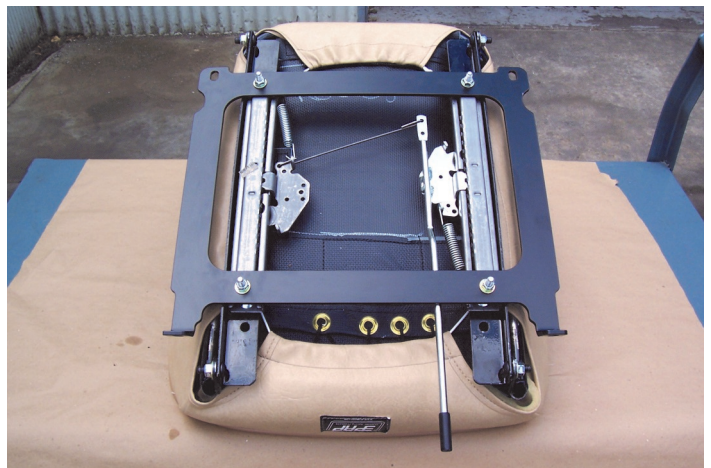


Fig. 6

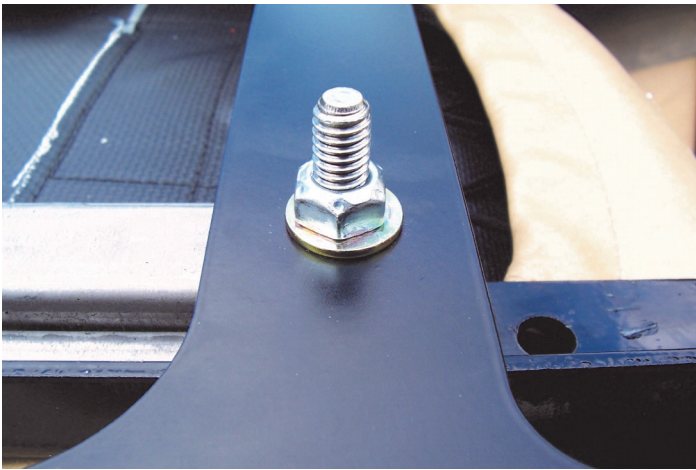


Fig. 7



Fig. 9

2. Remove OEM driver side seat and bracket from vehicle as shown in **Fig. 8**.



Fig. 8



Fig. 10

4. Once installed, driver PRP Roadster Seat should resemble **Fig. 11**.

3. Using M8x1.25-25mm hex bolts with M8 lock washers and M8 flat washers, install Driver Seat Bracket assembly from step 1 to driver side of vehicle as shown in **Fig. 9 & Fig. 10**. Hand tighter all bolts before tightening with M13 standard socket.



Fig. 11

PASSENGER SEAT INSTALLATION

This section will detail the installation of the passenger side PRP seat to vehicle.

1. Remove OEM passenger side seat and bracket from vehicle as shown in **Fig. 12**. It is possible that OEM body seat mounts are damaged **AND/OR** are in different locations than the Spidertrax Passenger Seat Bracket as shown in **Fig. 13**. This kit DOES provide extra hardware to solve both these problems (detailed in step 4).



Fig. 12



Fig. 13

2. Layout Passenger Reinforcement Plates using orientation shown in **Fig. 14**

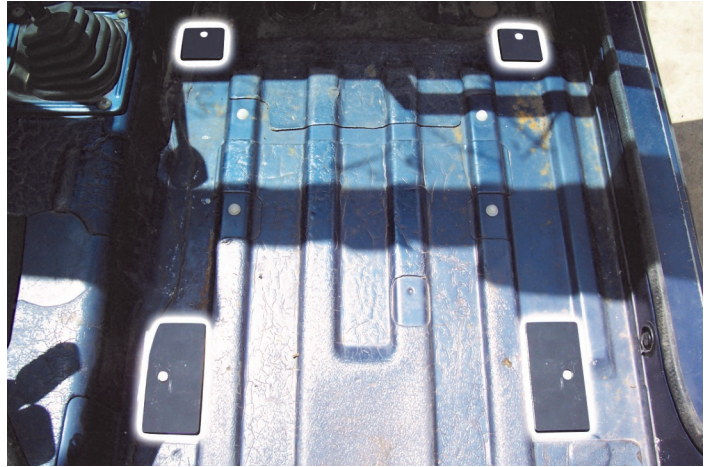


Fig. 14

3. Using M8x1.25-30mm hex bolts with M8 lock washers and M8 flat washers, install Passenger Seat Bracket on top of Passenger Reinforcement Plates as shown in **Fig. 15** & **Fig. 16**. Hand tighten all bolts before tightening with M13 Deep Socket. If OEM body seat mounts are damaged as shown in **Fig. 13**, follow step 4 for optional installation. Otherwise, skip to step 5.

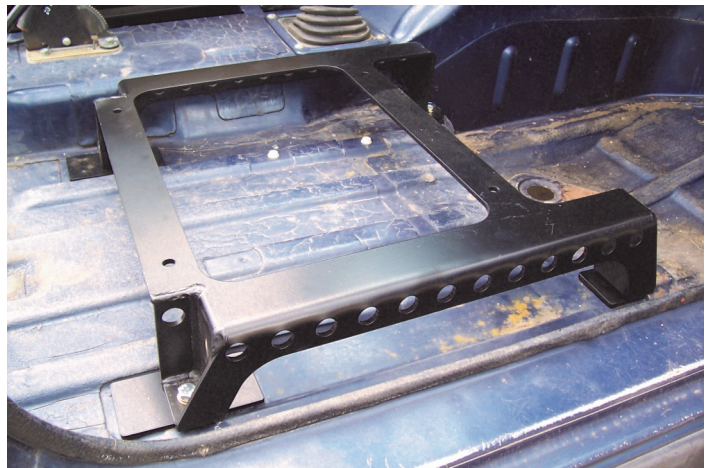


Fig. 15

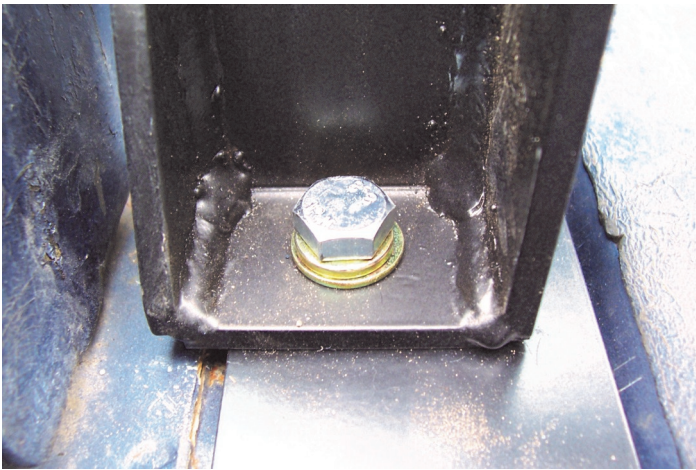


Fig. 16

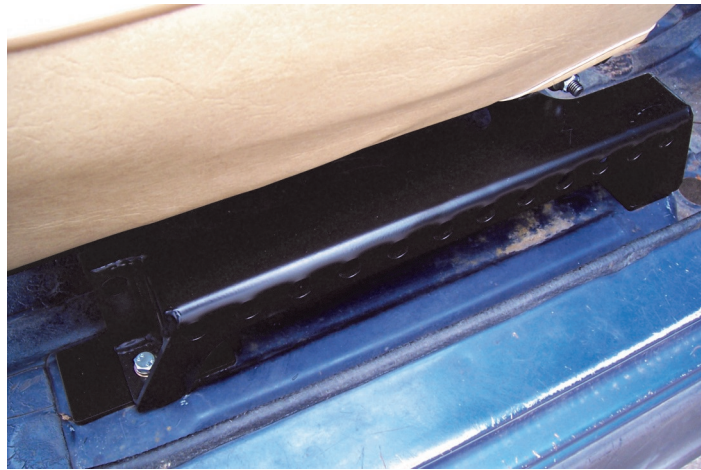


Fig. 18

4. **OPTIONAL**—If OEM body seat mounts are damaged **AND/OR** spaced closer together from Spidertrax Passenger Seat Bracket as shown in **Fig. 13**, use 3/8" x 2" fender washers & M8x1.25 hex nuts on underside of vehicle for Passenger Seat Bracket installation as shown in **Fig. 17**. Tighten bolts with M13 deep socket & M13 wrench. A small 3/8" drill may be needed to provide clearance hole through body for M8 bolts.

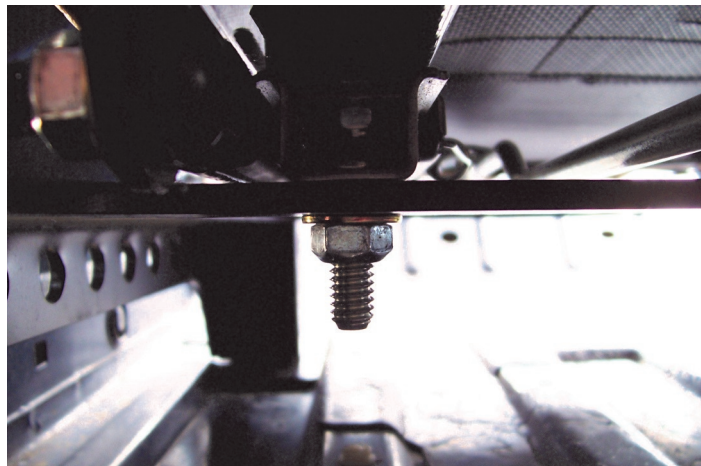


Fig. 19



Fig. 17

- 5. Using 5/16" type C hex nuts & 5/16" flat washers, install PRP Seat & Slide Rail to Passenger Seat Bracket as shown in **Fig. 18** & **Fig. 19**. Tighten nuts with 1/2" deep socket.
- 6. Once installed, passenger PRP Roadster Seat should resemble **Fig. 20**.



Fig. 20



Disclaimers & Warranty

WARNING

INSTALLATION OF ANY COMPONENT OR SYSTEM SHOULD ONLY BE PERFORMED BY THOSE EXPERIENCED IN AUTOMOTIVE MECHANICS AND PROCEDURES.

Spidertrax warrants to the purchaser that for the Warranty Period (as defined below), this product will be free from material defects in materials and workmanship. The foregoing warranty is subject to the proper installation, operation and maintenance of this product in accordance with installation instructions supplied to end customer. Warranty claims must be made by purchaser in writing within 30 days of the manifestation of a problem. Spidertrax's sole obligation under the foregoing warranty is, at Spidertrax's option, to repair, replace or correct any such defect that was present at the time of delivery.

The "Warranty Period" begins on the date the product is delivered to purchaser and continues for 1 year (365 days). Purchasers recognize and understand that four wheeling parts and equipment manufactured by Spidertrax Inc. are subject to varied conditions in the manner in which they are used. Therefore, excluded from the warranty are problems due to accidents, misuse, misapplication, storage damage, negligence, or modification to the product or its components.

FOR OFF-ROAD USE ONLY

DRIVE THE VEHICLE UNDER CONTROLLED CONDITIONS TO ENSURE PROPER INSTALLATION OF COMPONENTS. GRADUALLY WORK UP TO FOUR WHEELING SPEEDS.

WWW.SPIDERTRAX.COM



Product Instructions Part #: PSM-001

WWW.SPIDERTRAX.COM