

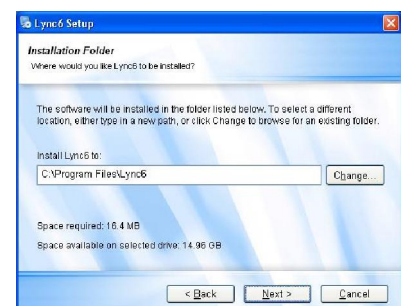
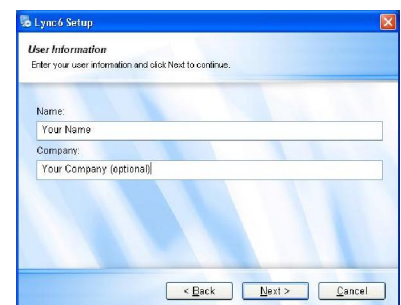
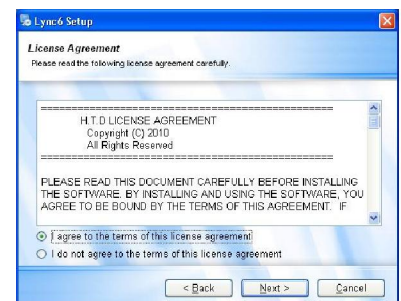
Installing and Using the PC Software for the Lync6 Whole-House Systems

We strongly recommend that you read through this document BEFORE you install the software or attempt to use it.

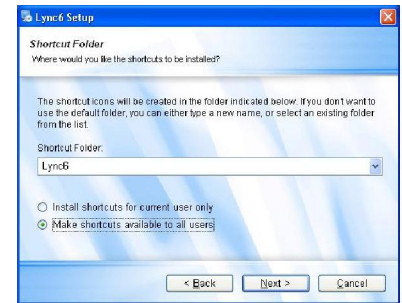
The software is only for use on PCs running the Windows XP, Windows Vista and Windows 7 operating systems. Once installed on your PC, the software will be able to communicate with the Lync6 Whole-House Controller over an RS232 Serial cable connected between your PC and the Lync6 Controller. Note: If your PC doesn't have a Serial Port, see the section later in this document.

Installing the Software:

1. Download the Lync software installation file (**Setup_Lync6_v1.1_HR.exe**) and save it on your PC in a convenient, safe location.
2. Navigate to that file on your PC and double-click on it to begin the installation process.
3. After a few moments, on your PC, you will see the screen shown on the right.
4. Click on the **"Next"** button to continue
5. You will now see the screen shown on the right. You can read the Use License Agreement and , if you agree to its terms, click where it says, **"I agree to the terms of this license agreement"**
6. Next, click on the **"Next"** button to continue
7. If you don't agree to the terms of the Agreement, the software will not be installed. Click on the **"Cancel"** button to exit & not install.
8. If you clicked on the **"Next"** button, you will now see a screen like the one shown on the right
9. Enter your name and, if desired, your company, then click on the **"Next"** button to continue
10. You will now see a screen like the one shown on the right. This screen shows where, on your PC, the software will be installed. While you can change this location, we recommend that you leave it at the software's default location and click the **"Next"** button to continue

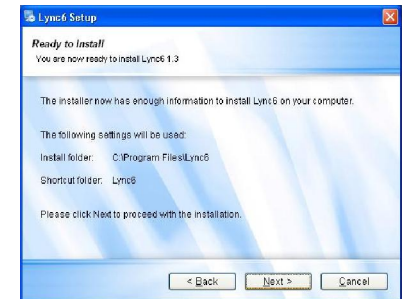


11. You will now see a screen like the one shown on the right. Having a "Shortcut" places an icon on your PC's desktop and makes it easier and faster to start the program when you're ready to use it. We recommend you click the button that allows the software to create a shortcut that will be available to all users, as shown in the example here.



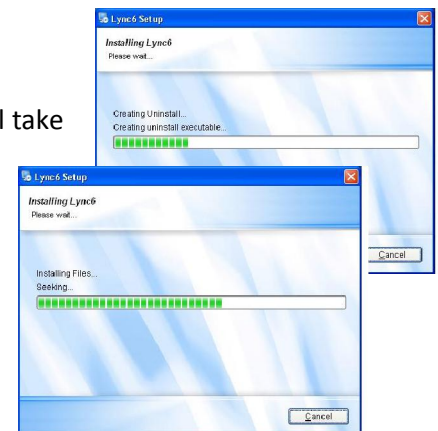
12. Click on the "Next" button to continue

13. The next screen (shown on the right) will confirm that all information has been gathered and the program is ready to install.



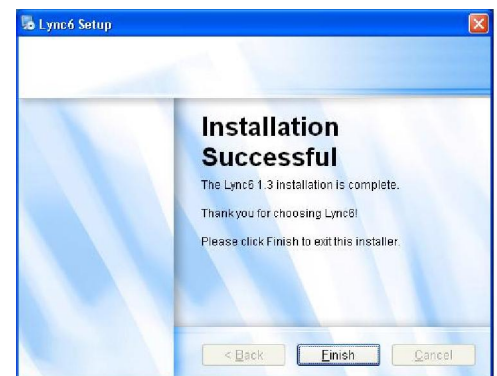
14. Click "Next" to continue

15. You will now see screens showing you that the software is installing. It will take a minute or two for this process to complete and you will see changes to the screen as it progresses. Allow this process to continue without interruption



16. When installation is complete, you will see a screen like the one on the right.

17. Click the "Finish" button to allow the program to finalize and exit.



The software is now installed. Go to the next section to see how to connect your PC to your Lync Controller and get operating.

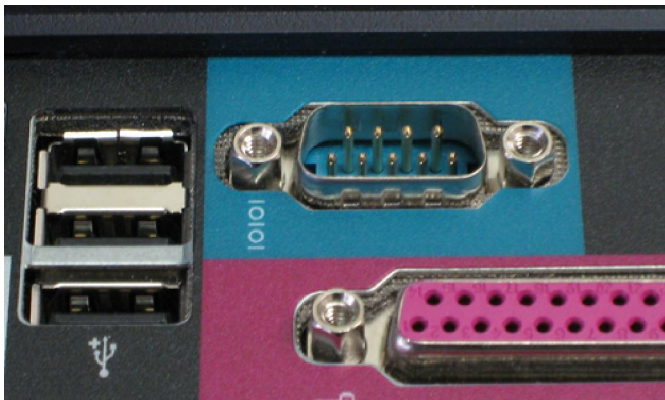
Using the Lync PC software with your Lync6 Controller & Software

The HTD software will allow you to use a PC to perform several functions on your Lync6 Whole-House System, including:

- Control any/all Zone functionality (including Zone Power On/Off, Source selection, and adjustment of Volume, Bass/Treble & Balance.)
- Rename Zones, using up to 10 alpha/numeric characters. Examples might include "Kitchen"; "Den"; "Bobs Room"; "Patio", etc. This makes it really easy when a person in one Zone wants to page another Zone. When they press the "Zone" button on the LyncPad they will see the other Zone names instead of just Zone numbers.
- Rename audio Sources that are connected at the central Lync6 Controller, using up to 10 alpha/numeric characters. This makes it easy for users to easily understand what centrally-connected Source they are selecting. Examples might include, "CableTV"; "Satellite"; "DVD"; "Tuner"; "iPod Dock", etc.
- Rename Sources being connected directly into a LyncPad, using up to 10 alpha/numeric characters. This makes it easy for users to easily understood what "Zone-connected" sources they are selecting. For this, it's a good idea to identify what Zone the Source is coming in from, by including the Zone name. Examples might include, "SRC Patio"; "SRC Den"; "SRC BR1"; "SRC Tom"; "SRC Garage", etc

Connecting the Lync6 Controller to your PC

In order for the software to work, you must have an RS232 Serial cable connected from the RS232 Serial connector on the back of the Lync6 central Controller, to your PC's RS232 Serial port. Below are two close-up photos of typical RS232 Serial ports on the backs of two different computers. An RS232 Serial port will typically have an icon by it that is labeled, "IOIOI" as shown below.



RS232 Serial port shown above in the blue area



RS232 Serial port shown above

You will find a similar RS232 Serial connector on the back of the Lync6 Controller, as shown in the image below.



You will need an RS232 Serial cable with female connectors on each end (available from most electronic and computer stores.) The RS232 Serial cable between the PC and the Lync6 Controller should not exceed 15' in length.

Oops! What if your PC doesn't have an RS232 Serial Port?

If your PC does not have an RS232 Serial Port (some don't), you can purchase a "**USB-to-Serial adapter**" and the needed software driver online, or from many local electronic or computer stores for \$14 - \$20. This adapter will allow connection of the RS232 Serial cable through one of the available USB ports on your computer and the Lync software will then be able work.

What USB-to-Serial adapter should you use? There are a wide range of brands and styles available in local electronics or computer stores and online and any of them should work fine. If you can't find one locally, go on the Internet and do a Google search on the phrase, "**USB-to-Serial adapter**". You will find many available in a wide range of prices from online providers. We have done testing with good results using a Model PL-2303 unit made by Prolific Technologies and sold by any number of online resellers.

Wherever you purchase the adapter, be sure it includes, or that you can download the correct software driver for the adapter and your computer's Windows operating system (XP, Vista, 7, etc).... the seller where you're getting the adapter will have the software driver and it should be no extra charge.

Install the adapter's software driver first on your PC BEFORE you try connecting the adapter. Follow the instructions provided by the seller you got the adapter from.

Once you've got the USB-to-Serial adapter's software driver installed, plug the adapter into one of your PC's available USB ports. Your PC will go through a process of recognizing the USB devices and will let you know when it's ready. Next, connect an RS232 Serial cable from the adapter to the RS232 Serial connector on the back of the Lync6 Controller.

Starting the Software on your PC

Now that your software is installed and you have connected an RS232 Serial cable between your computer and the back of the Lync Controller, it's time to get this all running. **Turn on the Lync6 Controller.** Double-click the "Lync6..." icon on your PC's desktop, or click Windows "Start", and look for the "Lync6" software in your installed programs to run.

REMEMBER: If you do not have the Lync Controller turned on and connected to your computer, the Lync software will not be able to start, and you will see an error message, "**Device Not Found**".

Using the Lync6 PC software

After you start the Lync software you will see a screen that looks similar the image shown below:



With your mouse, click on the **"POWER ALL ON"** button at the bottom left of the screen. This will turn on all 6 Zones in the Lync6 system, and the screen will change to look similar to the image below:



Editing Zone Names: As you can see above, at first your Lync Zones come named as Zone 1, Zone 2, Zone 3, etc. You can easily edit the Zone names to be what you want. As shown below, click with your mouse inside the black box under **"ZONE NAME"** for the Zone you wish to rename. Then, type in the new name you want (up to 10 characters) and then press your PC keyboard's Enter key. We suggest you use Zone names that would be familiar to other users (Kitchen, Den, Patio, Marys Room, etc.) That will make it very easy for other users to properly select the Zone they wish to Intercom with. You can see, in the image below, that we have renamed some of the Zones. The software makes these changes in all of the LyncPads connected to the Lync6 Controller. To make these changes permanent, click on **"MEMORY SAVE"** button. If needed, you can rename Zones at any future date.



Editing Source Names: From the factory, Sources come named as Source 1, Source 2, Source 3, etc. You can edit/change Source Names by clicking on any of the software's Source up/down buttons (shown on the right) to select a Source. Your selection will appear in the black **"SOURCE"** box to the left of the up/down arrow buttons. Click in the black box and enter a new Source Name (up to 10 characters), and then press your PC keyboard's Enter key. You will see that the software automatically adds the Source Number in front of the Source name you entered.

Suggestions on Source Naming: Source Names make it easy for other users to know what Source they are selecting. For central Sources #7-11, that are always connected directly to the back of the central Lync 6 Controller and don't change, it's a good idea to give them names that specifically describe what they are (such as DirecTV, Blu-Ray, Tuner, DVD, iPodDock, etc) so that a user would easily be able to know exactly what Source device is being selected.

For in-Zone Sources #1-6, that are always connected through the Zone LyncPads or through a Zone Source Input Panel, the Source may change depending on what's connected from time to time. For example, you might have your iPod connected to the Kitchen LyncPad today (Zone 1/Source 1 in our example above) but tomorrow another family member might have a portable CD player connected to the Kitchen LyncPad. So, if Source 1 were named "iPod" that would only be accurate as long as the iPod is connected. If a person in another Zone saw Source 1 listed as "iPod" and selected it,

they might actually be listening to a portable CD player if that's what currently connected in that Zone. For this reason it's a good idea to give in-Zone Sources #1-6 the same name as their Zone Name. For example, if Zone 1 is named "Kitchen", it's a good idea to also name Source 1 as "Kitchen". That way, if a user selects the Source named "Kitchen" he/she will be hearing whatever device is connected to the Kitchen's LyncPad, whether it's an iPod or something else.

Zone Volume, Bass, Treble, Balance adjustments: Click on the small, square button, shown on the right (located between the Up & Down arrows each Zone) to switch between control of Volume, Bass, Treble and Balance. Then, use the Up or Down arrows to adjust to your preference. Each Zone can be adjusted independently this way.



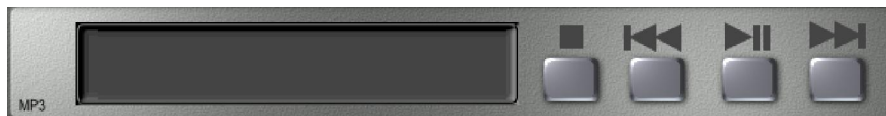
Power On/Off: You can turn any single Zone On or Off by clicking on that Zone's **POWER** button (this function turns the LyncPad for that Zone On or Off at the same time.) You can also turn all Zones ON or OFF by using the **ALL ON** and **ALL OFF** buttons at the bottom of the screen. When all Zones are turned off, the Amplifier is triggered into an extreme low-power, energy saving mode. When any Zone is turned on, the Amplifier comes back up to standard power.

Do Not Disturb (DND): You can and set Do Not Disturb for any Zone by clicking on the **DND** button. When a Zone is in DND mode, any selected music for that Zone will continue to play, but Intercom will be blocked.

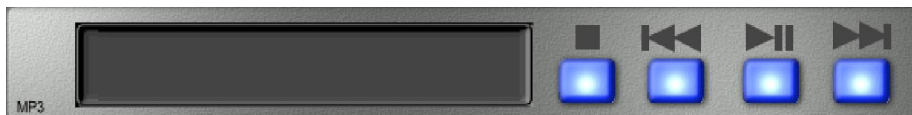
Source Selection: You can select the Source for any Zone by clicking the Source up/down buttons for that Zone until you see the desired Source name displayed in the Source window.



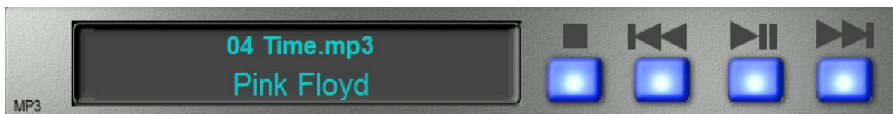
MP3 Control: You can manage the internal MP3 player using the controls near the bottom-right of the screen. The image below shows that the MP3 player is off (not selected by any Zone.)



When the MP3 player is selected as a Source by any Zone (or from within the software), the MP3 player's buttons illuminate, as shown in the image below, even though nothing is actually playing yet.



You can start a song playing in a Zone by selecting the MP3 player as a Source in that Zone, then by clicking on the "Play/Pause" button (3rd from the left.) When a song is playing through the MP3 player, the song title and artist information will be displayed in the window (if that data was captured when the MP3 recording was saved.)



During play, clicking on the Stop (1st) button stops playback. . Clicking on the Previous (2nd) button replays the previous recording. Clicking on the Play/Pause (3rd) button pauses playback. Clicking on the Next (4th) button jumps to the next recording

Memory Settings: You can save up to three (3) different configurations of settings by clicking on one of the Memory buttons (**M1**, **M2**, **M3**) then clicking on the **"SAVE"** button. This makes it easy to quickly bring all zones to a pre-configured state.

When you exit the software, your last settings are automatically saved into the Lync Controller's memory.