

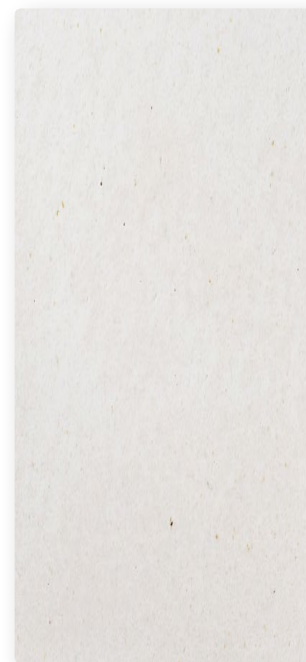
AR^{to}TO

Oleson Series

High Fired, Handcrafted, Glazed Terracotta
Cushion Edge 5/8" Thick



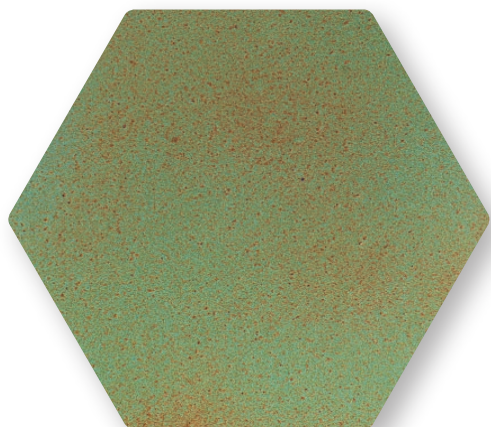
9x9 Oleson, Yellowstone V3



3x6 Oleson, Sierra Snow V2



3x3 Oleson, Black Diamond V2



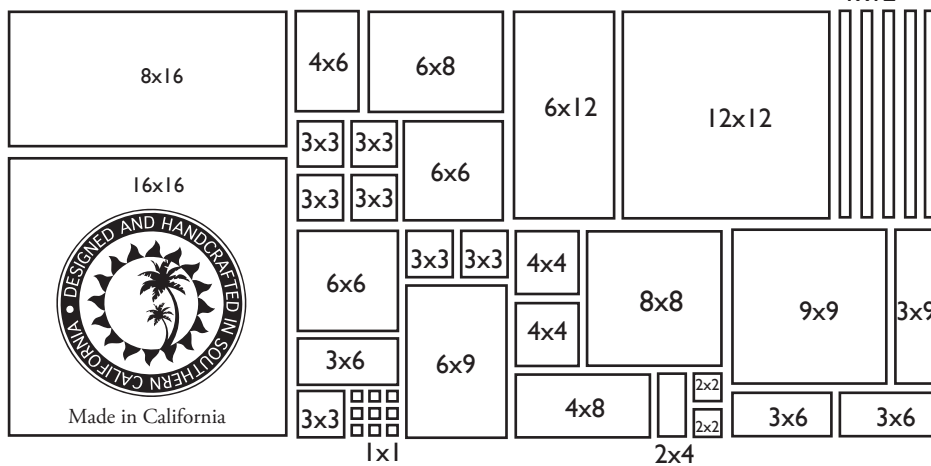
4" Oleson Hexagon, Light Copper V3
Also Available in 6" Hexagon

Trim and Accessories Available

Quarter Round, Surface Bullnose, Cove Base, and Mouldings

Trim color may vary from field color.

AR^{to}TO Clay & Ceramic Products are made
from locally sourced material and contain
33% recycled content.



Indoor



Outdoor



Freeze/Thaw



Pedestrian



Vehicular



Walls



Floors



Recycled Content

The variation and elegance are achieved with the use of natural materials and enhanced by handcrafting each unit. This sample is representative, but product shipped may differ from this sample. All material should be inspected prior to installation since no claims will be honored thereafter.



Signature Glaze Colors

High Fired, Handcrafted, Glazed Terracotta



Light Lemon V2



Egg Cream V2



Lemon Scent V2



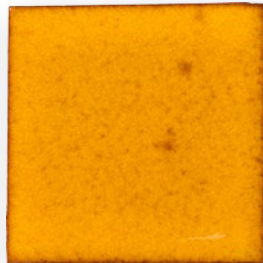
Custard V2



Sunflower V2



Mandarin V2



Cadmium Yellow V3



Sunset V2



Watermelon V2



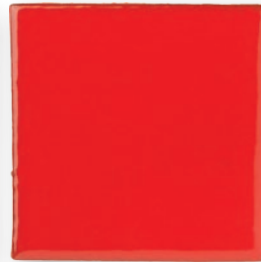
Cadmium Orange V3



Brick Red V2



Cadmium Red V3



Cherry Tomato V2



Radish V2



Peach Pie V2



Bubble Gum V2



Pinot Noir V2



Plum V2

Signature Color Palette

Monrovia Series 5/8" Thick, Square Edge • Oleson Series 5/8" Thick, Cushion Edge
• Studio Field 3/8" Thick, Square Edge • All Ceramic Trim & Decos



Indoor



Outdoor



Freeze/Thaw



Walls



Floors



Recycled Content



Made in California

The variation and elegance are achieved with the use of natural materials and enhanced by handcrafting each unit. This sample is representative, but product shipped may differ from this sample. All material should be inspected prior to installation since no claims will be honored thereafter.

ARTO Clay & Ceramic Products are made from locally sourced material and contain 33% recycled content.



Signature Glaze Colors

High Fired, Handcrafted, Glazed Terracotta



Ice Storm V3



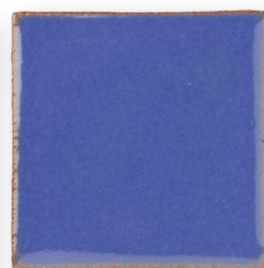
Igloo V2



Frost V2



Blue Satin V2



Lake Tahoe V2



Ultramarine V2



Midnight Blue V3



Real Teal V2



Blue Haze V2



Aqua V3



Peppermint V2



Kale V2



Turtle V3



Viridian V2



Jalapeño V2



Guacamole V2



Herbs V2



Lucky Green V2



Kelp V2



Made in California



Aloe Vera V2



Rhino V2

Signature Color Palette

Monrovia Series 5/8" Thick, Square Edge • Oleson Series 5/8" Thick, Cushion Edge
• Studio Field 3/8" Thick, Square Edge • All Ceramic Trim & Decos



Indoor



Outdoor



Freeze/Thaw



Walls



Floors



Recycled Content

ARTO Clay & Ceramic Products are made from locally sourced material and contain 33% recycled content.

The variation and elegance are achieved with the use of natural materials and enhanced by handcrafting each unit. This sample is representative, but product shipped may differ from this sample. All material should be inspected prior to installation since no claims will be honored thereafter.



Signature Glaze Colors

High Fired, Handcrafted, Glazed Terracotta



Great White V2



Pure White V2



Alabaster V3



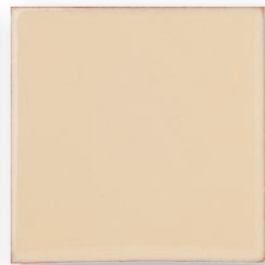
Champagne V3



White Bread V2



Beach Sand V3



Putty V2



Shiitake V3



Nut Shell V3



Deli Mustard V3



Silver Shadow V2



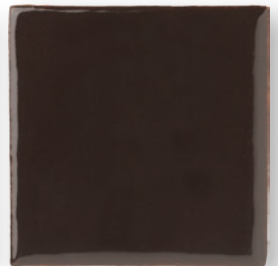
Battleship V2



Suede V3



Abyss V2



Licorice V2



Pottery Brown V2



Maple V2



Mocha V2



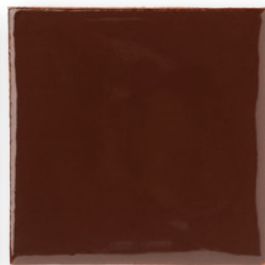
Chocolate Bar V2



Made in California



Espresso V2



Cordovan V2

Signature Color Palette

Monrovia Series 5/8" Thick, Square Edge • Oleson Series 5/8" Thick, Cushion Edge
• Studio Field 3/8" Thick, Square Edge • All Ceramic Trim & Decos



Indoor



Outdoor



Freeze/Thaw



Walls



Floors



Recycled Content

ARTO Clay & Ceramic Products are made from locally sourced material and contain 33% recycled content.

The variation and elegance are achieved with the use of natural materials and enhanced by handcrafting each unit. This sample is representative, but product shipped may differ from this sample. All material should be inspected prior to installation since no claims will be honored thereafter.



Glazed Terra Cotta

Handcrafted & High Fired



Black & Blue V4



Persian Blue V3



Ash Gray V2



May Gray V2



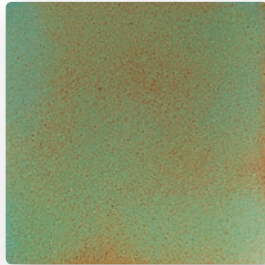
Black Diamond V2



Turquoise V2



Chrome V3



Light copper V3



Copper V3



Elder Green V3



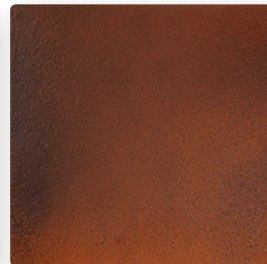
Beechnut V3



Red Iron V3



Spanish Brown V2



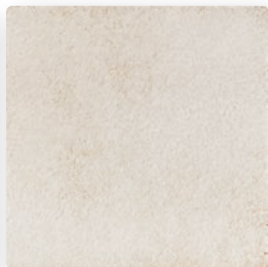
Leather V3



Pueblo Red V2



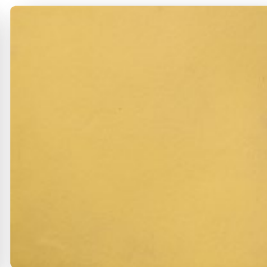
Sierra Snow V2



Walnut Spice V3



Yellowstone V3



Gold Rush V2



Made in California



Apple Red V2



Hazard County Orange V2

Premium Color Palette

For use with Monrovia (square edge) 5/8", Oleson (cushion edge) 5/8" thick,
Studio Field (square edge) 3/8" thick, Decos & Trim.



Freeze/Thaw



Walls



Floors



Indoor



Outdoor



Pedestrian



Vehicular



Recycled Content

*ARTO Clay & Ceramic Products are made
from locally sourced material and contain
33% recycled content.*

The variation and elegance are achieved with the use of natural materials and enhanced by handcrafting each unit. This sample is representative, but product shipped may differ from this sample. All material should be inspected prior to installation since no claims will be honored thereafter.

ALL OLESON TILES ARE 5/8” THICK NOMINAL

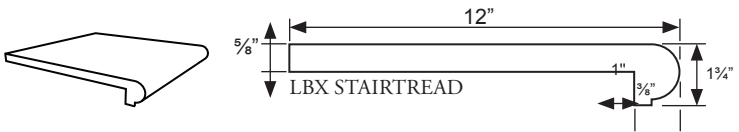
Shape	Oleson	Nominal Size	Coverage pc/Sq.ft.
	16 x 16 Square	16 5/8 x 16 5/8	0.56
	12 x 12 Square	12 3/8 x 12 3/8	1
	9 x 9 Square	9 1/8 x 9 1/8	1.7
	8 x 8 Square	8 1/8 x 8 1/8	2.25
	6 x 6 Square	6 x 6	4
	4 x 4 Square	3 7/8 x 3 7/8	9
	3 x 3 Square	2 7/8 x 2 7/8	16
	2 x 2 Square	1 3/4 x 1 3/4	47
	1 x 1 Square	1 1/16 x 1 1/16	144

Shape	Oleson	Nominal Size	Coverage pc/Sq.ft.
	8 x 16 Rectangle	8 1/8 x 16 5/8	1.12
	6 x 12 Rectangle	6 x 12 3/8	2
	6 x 9 Rectangle	6 x 9 1/8	2.6
	6 x 8 Rectangle	6 x 8 1/8	3
	4 x 8 Rectangle	3 7/8 x 8 1/8	4.5
	4 x 6 Rectangle	3 7/8 x 6	6
	3 x 9 Rectangle	2 3/4 x 9 1/8	5.3
	3 x 6 Rectangle	2 3/4 x 6	8
	2 x 4 Rectangle	1 3/4 x 3 7/8	18
	1 x 12 Rectangle	1 1/16 x 12 3/8	12

Pattern Example	Oleson	Nominal Size	Coverage pc/Sq.ft.
	4” Hexagon	3 7/8 x 3 7/8	11.7
	6” Hexagon	6 x 6	4.25
	12” Hexagon	10 1/2 x 10 1/2	1.5

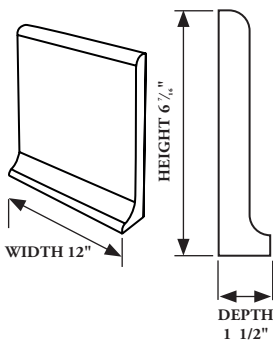
OLESON ACCESSORIES

Stairtreads	Nominal Size Depth x Width x Height
RBX Stairtread	12 x 12 3/8 x 1 3/4
RBX Stairtread Corner	12 x 12 3/8 x 1 3/4
LBX Stairtread	12 x 12 3/8 x 1 3/4
LBX Stairtread Corner	12 x 12 3/8 x 1 3/4
LBX Stairtread	12 3/8 x 12 3/8
LBX Stairtread Corner	12 3/8 x 12 3/8

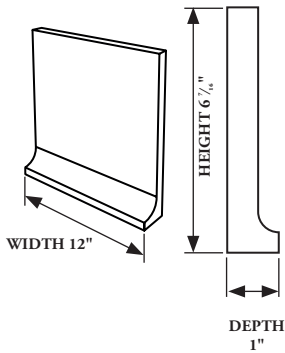


Cove Base	Nominal Size depth x Width x Height
12 x 4 Flat Top Cove Base	12 x 12 3/8 x 1 3/4
6 x 12 Bullnose Cove Base	12 x 12 3/8 x 1 3/4
6 x 12 Flat Top Cove Base	12 x 12 3/8 x 1 3/4

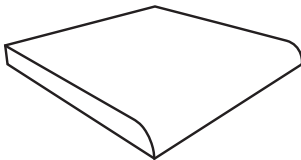
BULLNOSE COVE BASE



FLAT TOP
COVE BASE



SURFACE BULLNOSE



Any Monrovia Tile size can be made into a bullnose.
Call ARTO for pricing.



Slip and Fall Resistance for Floor Applications

	DCOF Required	Suitability
Dry & Level Interiors	N/A	Yes
Wet & L	≥0.42	Yes
Pools & Exterior Wet Areas	≥0.60	Yes*
Ramps & Inclines	≥0.65	Yes*

DCOF >0.42 is minimum requirement for commercial flooring when tested in accordance with ANSI 137.1-2012. *Grit can be added to glazes to meet requirements for these applications

Other Applications

Walls/Backsplashes

Countertops

Pool Wall Linings**

Fountains/Water Features**

**Although testing show tiles are resistant to common pool chemicals, they can still be affected by acidic, alkaline, or unbalanced water chemistry. ARTO recommends adding over glaze to all tiles used in submerged or waterline applications.

Test Data

	Minimum
C373 Water Absorption	≤7.0% or less (vitreous)
C482 Bond Strength	≥250 lbs
C648 Breaking Load	≥300 lbs
C650 Chemical Resistance	Resistant to pool chemicals
C1026 Freeze Thaw Resistance	Undamaged after 300 cycles
DCOF Slip Fall Resistance	≥0.42 (interior)

Setting Materials

Mortar, grout, membrane, and other product recommendations from LATICRETE, MAPEI, and ARDEX are available online at artosurfaces.com. ARTO strongly recommends using products from the same manufacturer for a warranted installation system and to avoid conflicts.

Freezing and Thawing Conditions

Tile bodies (bisques) are high fired to resist damage from freezing and thawing conditions. Premium Glazes are resistant but we recommend overglaze for Signature Glazes and hand painted Decos

Grout Joint Recommendations

3/8" in standard application; some patterns may require wider joints

Classic Colors

Unglazed color through body. Great for indoor and outdoor commercial and residential floors and walls. Ideal for wet and freeze thaw conditions. * Seal with penetrating sealer only for exterior applications; topical or penetrating sealer can be used indoors.

Premium Glazes

Wonderful for kitchens, bathrooms, washrooms, floors and walls. Excellent choice for indoor and outdoor commercial and residential floors and walls and in wet and freeze thaw conditions. Glazes have been laboratory tested for chemical resistance against pool chemicals. Make sure water chemistry is properly balanced for best long term performance of pool tiles. Glazes can be affected by out of balance, highly acidic or alkaline water. * Apple Valley Red and Hazard County Orange must have grit added for floor applications (see below).

Signature Glazes

Extensive variety of colors. Excellent for residential use in bathrooms, kitchens, walls, backsplashes and much more. Call Arto for best performance recommendations. Can be used in waterline applications if overglaze is specified (see below).

Overglaze

Arto can add a clear overglaze to Signature colors for tiles being used in pools, fountains and other applications where the tiles are continually submerged in water for an additional charge. Please note: Overglaze will make tiles glossy and will affect the glaze's final color. Overglaze can be affected by out of balance, highly acidic or alkaline water.




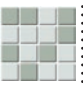



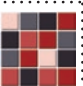
Glaze Grit

Arto can add grit to the glaze to increase the coefficient of friction, or make a smooth glossy glaze less slippery for an additional charge. Call for Pricing. Please note: Grit will add black speckles to tiles which will affect appearance especially on light colored glazes.

Using Colored Grout?

Use a grout release or seal tile prior to grouting to help prevent grout staining when using a contrasting grout color.

Color shade variation guide

		Uniform Appearance: Differences among pieces from the same production run are minimal. Each piece has the same texture, color shade and pattern with minimal and insignificant variation from tile to tile.
		Slight Variation: Clearly distinguishable differences in texture and/or pattern within similar colors. While the texture, color and shade may "move around" somewhat from tile to tile, the general appearance from tile to tile is quite similar.
		Moderate Variation: While the colors present on a single piece of tile will be indicative of the colors to be expected on the other tiles, the amount of color on each piece may vary significantly. The texture color and shade may change considerably from tile to tile. All the colors present on a single tile will be present to some degree in all of the tiles.
		Random Variation: Random color differences from tile to tile; one tile may have different colors from that on other tiles, thus the final installation will be unique. Random color differences from tile to tile; one tile may have totally different colors from that on the other tiles. These tiles cannot be selected by the customer from just one or two pieces.

Technical Data Online
Visit artosurfaces.com for technical documents including
Installation Guidelines
Product Recommendations
CSI 3-Part Specifications
Test Data Results