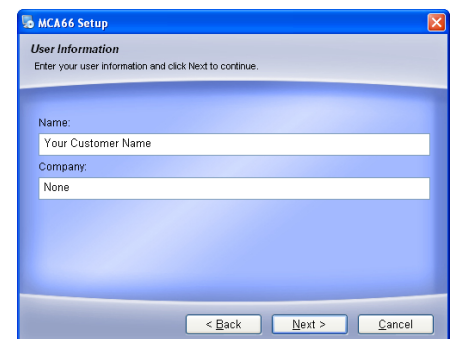
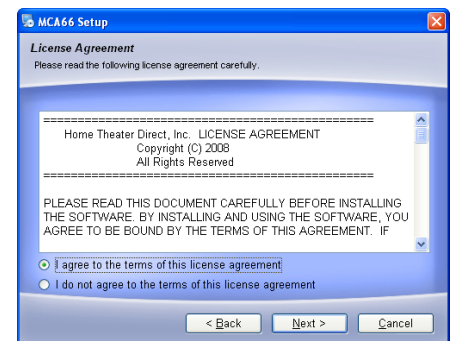


Installing & Using PC Software for MC66 & MCA66 Controllers

IMPORTANT NOTICE: Software for the MC66 & MCA66 Whole-house Controllers is licensed to you for your use only with our products. The license does not allow you to charge for re-distribution of the software, to resell for use the software with other equipment or to provide the software to anyone other than a purchaser of our products. This software is provided to you as-is, without any guarantee of functionality or applicability and is not guaranteed to be bug-free or without errors. We are under no obligation to modify, correct any errors or provide support for the software. Additional details of the license agreement are shown in the startup screen of the software at installation time. Your continued use of the software indicates your acceptance with these license terms and your agreement to comply with them. If you do not agree to accept them, you must delete all copies of the software.

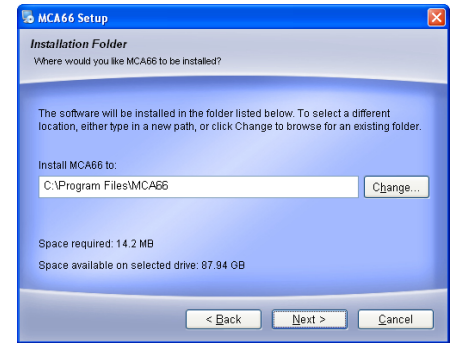
Installation of the software:

1. The downloadable file is provided in zipped format. You should unzip the file onto your Desktop or another folder you can easily remember.
2. It is recommended that you exit other running software for the installation of this software.
3. Connect an RS232 Serial cable between the connector on the rear of the MC66 or MCA66 Controller and your PC's Serial (or COM) port. If your PC does not have a Serial or COM port, you will not be able to use this software.
4. Turn on the MC66 or MCA66 Controller.
5. On your PC, begin installation of the software by clicking with your mouse cursor on "Start", then on "Run". In the box that pops up, use the "Browse" button to navigate to the folder where you saved the unzipped software file (**MC66_MCA66_Setup_V1.1.exe**), then double-click on the file. You will now see it in the "Run" window. In the "Run" window, click on "OK" to begin installation.
6. You will see the screen to the right - Click on "Next" to continue
7. You will next see the screen to the right.
If you accept the terms of the Software License Agreement, click on "I agree...", then click on "Next" to continue installation.
8. You will next see the screen to the right.
Enter the user information, then click on "Next" to continue



9. You will next see the screen to the right.

This shows the location on the PC where the application will be installed. While you can locate it another location, we recommend that you accept the location default by clicking on “Next” to continue

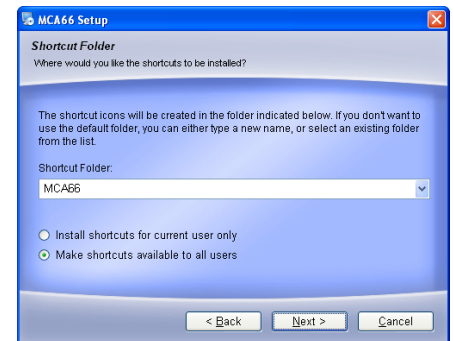


10. You will next see the screen to the right.

This shows the name that will be given to the “Shortcut” icon that will appear on your PC's desktop. This is the icon you will use to start the software for use.

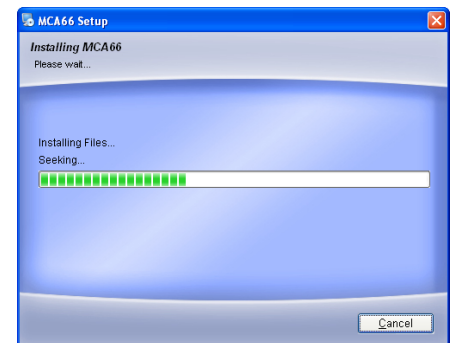
You can either accept the default Shortcut name or enter one that seems more logical to you.

We recommend that you also check “Make shortcuts available to all users”. Then click “Next” to continue.



11. The next screen you see (not shown here) will confirm your selections. If OK, click on “Next” to continue.

12. You will next see the screen to the right, showing installation progress. This will usually take 1-2 minutes or less to complete.



13. After installation is complete, you will see the screen to the right.

Click the “Finish” button to complete the installation.



While not required, it is usually a good idea to reboot your computer following installation of software before using it.

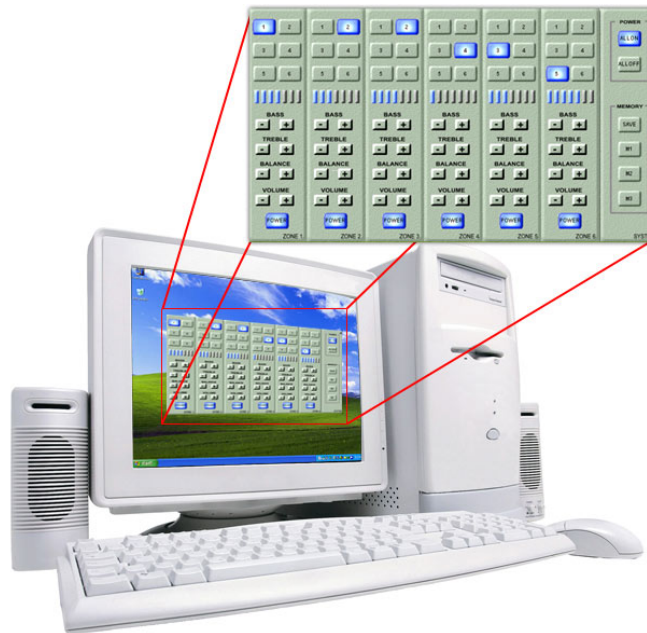
Using the software (after installation & reboot):

Connect a serial cable from the MC66 or MCA66 Controller's 9-pin serial port to your PC's Serial/COM port.

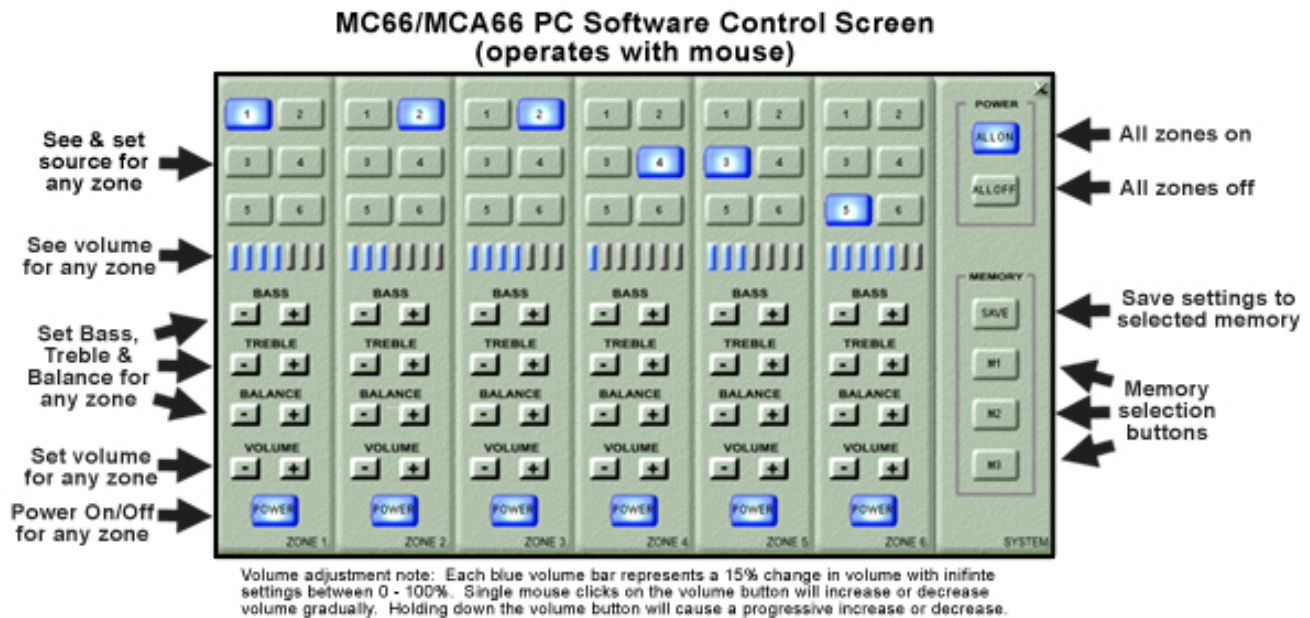
Power on the MC66 or MCA66 Controller.

Start up the software on your PC by double-clicking the Shortcut icon on your Desktop. .

When the software starts, you will see the following screen on your computer's monitor:



You can now use your mouse, clicking on the screen buttons to control all functions of all zones. Essentially, you have the ability to duplicate any Keypad function of every Zone, all from the screen of your PC.



The software controls the MC66 or MCA66 even if Zone Keypads are not connected.

However, it is important to remember that the central MC66 or MCA66 Controller **MUST** be connected to your PC for the software to operate. If you try starting the software without the Controller connected, the software will attempt to communicate with it and, when it fails to find the Controller, the software will stop running and exit.