



Kathryn, 29, enjoys decorating ceramics. With the Porcelain Painter all without oven fixing.



The calligraphy painter with calligraphy tip



Tips and tricks:

1. New crockery should be cleaned with a scouring agent and a small sponge first. Afterwards they should be wiped with Marabu-Cleaner or White Spirit so that they are dust and grease-free.
2. We recommend using new crockery for a while before you paint it. Arcopal crockery is not suitable for painting with Porcelain Painters.
3. The paint is dishwasher-safe at a maximum 50°C after 3 days.
4. If you want to do it as quickly as possible, the drying time of 3 days can be reduced to 30 minutes at 170°C or 338°F in the oven.
5. It is possible to make corrections or completely remove the paint applied using Marabu-Cleaner or White Spirit provided the paint has not dried.
6. To ensure that the application is always thick and even, you will need to recharge the tip of the painter during the painting process. Put the cap on the painter, shake and carefully press the tip 2-3 times only. Do not leave the painters lying open (danger of drying up), even if you have finished painting. Store in a horizontal position.
7. If the tips are dirty or have slightly dried up, rinse them under the tap. Afterwards let them dry thoroughly.
8. Allow the outlines to dry briefly before they are coloured in.
9. Do not paint the cutting surfaces or drinking rims of crockery, as abrasion can damage the design.

www.marabu-creative.com



Compatible products:



Your local Marabu-retailer:



Marabu www.marabu-creative.com

Marabu GmbH & Co. KG
74321 Bietigheim-Bissingen
Germany



Designs of your dreams – Porcelain painting without oven fixing



0311 - GB 5911 05 073
4 007751 481320





The outline painter for fine details



- ▶ Paint, allow to dry (3 days), finished!
- ▶ Dishwasher-safe without oven fixing
- ▶ Paint tips: calligraphy, brush, Fineliner and universal tip
- ▶ Water based, odourless, lightfast. For children from 6 years on

Marabu-Porcelain Painter is a high gloss porcelain painter, which is completely dishwasher resistant **without the bother of oven fixing**. The odourless, water based paint is even ideal for children. Because of the practical and easy application of the painter, the most beautiful porcelain designs turn out to be a success for geniuses of any age.

The Porcelain Painter Range offers **shades within a colour system**. Basic and fashion colours can be always combined with the corresponding **Metallic and Glitter shades**. Whether tastefully colour-matched creations or extravagant colour combinations are desired – everything is possible with the wide colour range from Marabu.

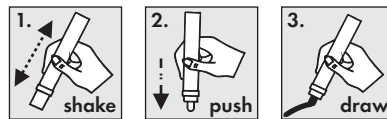
Various **kinds of painting techniques** can be easily achieved with the painters. Porcelain Painters are offered in **4 different tip shapes/sizes**: from large paint applications with the brush tip, fine painting with the outline & Fineliner tip and decorative writing with the calligraphy tip.

Here's how it's done:



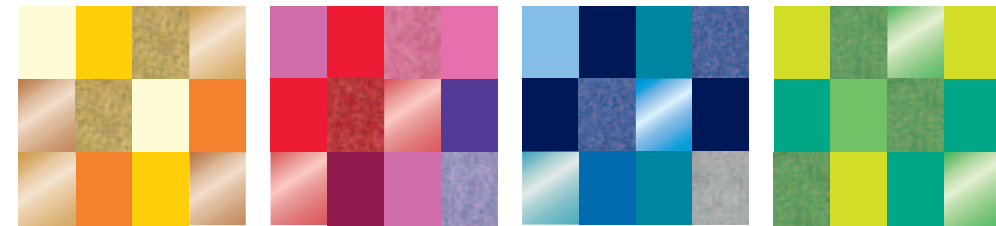
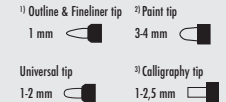
- 1.** Clean the crockery with a scouring agent and a small sponge before painting. Afterwards it should be wiped with Marabu-Cleaner or White Spirit so that it is dust and grease-free. Before use, shake the painters well with the cap closed. Press onto the tip repeatedly until the ink is visible in it (do not continue once the ink appears in the tip as this may overload it).
- 2.** Draw free-hand outlines with the outline painter or copy the motif using carbon paper. For this, put the tracing paper on the paper design of the motif, fix with masking tape on the crockery and go over the motif using a pencil while putting sufficient pressure on it to trace the drawing.
- 3.** Allow the outlines to dry briefly, then paint the motif with the chosen colours. Decorate the design with letters (e.g. name) just as you like.

Allow the painted mug to dry for 3 days. Now everything is dishwasher-safe at a maximum 50°C.



Colour Range Marabu-Porcelain Painter:

Basic and fashion shades		Metallic shades		Glitter shades	
271 ivory	141 sky-blue ⁽¹⁾	070 white ⁽¹⁾	082 silver ⁽¹⁾	752 metallic-blue	532 glitter-red
220 sunshine yellow ⁽²⁾	142 gentian ⁽²⁾	073 black ⁽¹⁾⁽²⁾⁽³⁾	084 gold ⁽¹⁾⁽³⁾	792 metallic-petrol	533 glitter-pink
225 tangerine ⁽¹⁾	293 night blue ⁽¹⁾⁽²⁾		087 copper	767 metallic-green	507 glitter-lavender
125 cherry ⁽²⁾	092 petrol		732 metallic-red	770 metallic-white	594 glitter-sapphire
034 bordeaux ⁽¹⁾⁽²⁾	061 reseda ⁽²⁾		733 metallic-pink		563 glitter-peridot
033 rose pink ⁽²⁾	158 apple ⁽²⁾				582 glitter-silver
005 raspberry	153 mint				584 glitter-gold
251 viole ⁽²⁾	295 cocoa ⁽²⁾				



A world of colour with Porcelain Painter

