

## Class I Group C & D, Class II Group G and Class III Approved

Approved for hazardous areas of atmosphere containing grain dust, flour, starch, combustible plastics, hazardous vapors and gases.

For use in the following explosive atmospheres only: gasoline, petroleum, naphtha, alcohol, acetone, lacquer solvent vapors and natural gas.

### Model 912

Safety approved 900 series light, alkaline/carbon zinc, 2 D cells.

### Model 911

Same as 912, plus waterproof and 3-position switch.

### Model 933

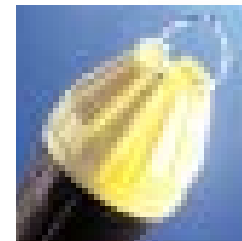
Safety approved 900 series light, alkaline/carbon zinc, 3 D cells.

### Model 932

Same as 933, plus waterproof and 3-position switch.



Model 932



Optional Ring Hanger Available.



Model 912



Model 911



Model 933



## Class I Group C & D Approved

Approved for areas of atmosphere with hazardous vapors and gases.

For use in the following explosive atmospheres only: gasoline, petroleum, naphtha, alcohol, acetone, lacquer solvent vapors and natural gas.

### Model N35

ABS body, waterproof, 3-position switch, 2 D cells. National Stock #6230-00-269-3034

### Model N35-2

Fire retardant, waterproof, 3-position switch, 2 D cells. National Stock #6230-00-299-3035

### Model N33-2

Fire retardant, waterproof, 2-position switch, 3 D cells. National Stock #6230-00-270-5417

### Model N44

Right angle light, ABS body, waterproof, 3-position switch, 2 D cells. National Stock #6230-00-161-6422



Model N35



Model N35-2

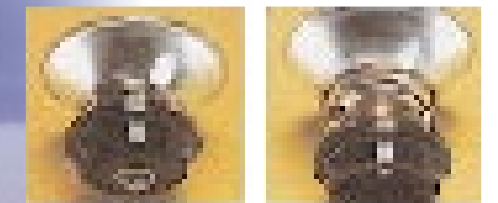


Model N33-2



Model N44

These Fulton safety approved models contain a special "circuit breaker" spring assembly which instantly disconnects the bulb from the battery in the event of a broken bulb. The Fulton models are also UL and MSHA Class I, Group C & D approved and meet all U.S. government specifications for use in hazardous areas.



These models also meet ASTM standard specification F 1014-86 for Type I, II and III, for use in hazardous locations (flammable gases and vapors).

| Model # | # of Batteries | Standard | Waterproof | Carbon Zinc Approved | Alkaline Approved | Type I Group C & D | Type II Group G |
|---------|----------------|----------|------------|----------------------|-------------------|--------------------|-----------------|
| 911     | 2 cell         |          | X          | X                    | X                 | X                  | X               |
| 912     | 2 cell         | X        |            | X                    | X                 | X                  | X               |
| 932     | 3 cell         |          | X          | X                    | X                 | X                  | X               |
| 933     | 3 cell         | X        |            | X                    | X                 | X                  | X               |
| N35-2   | 2 cell         |          | X          | X                    | X                 | X                  |                 |
| N33-2   | 3 cell         |          | X          | X                    |                   | X                  |                 |
| N35     | 3 cell         |          | X          | X                    | X                 | X                  |                 |
| N44     | 2 cell         |          | X          | X                    | X                 | X                  |                 |

NOTE: Approvals are good only with assigned PR bulbs.

prosac

Distribuidor Autorizado

617-1212 Fax: 617-1213

contacto@prosac.com.pe

www.prosac.com.pe

facebook.com/distribuidor3m

