



PANHARD KIT (PNH-001) INSTRUCTIONS

GENERAL DESCRIPTION

The Spidertrax Panhard Kit is used to add lateral stability to the front axle of a Suzuki Samurai. By adding lateral stability, the negative effects of the Spring Over Axle (SPOA) are eliminated. These negative effects include axle wobble at critical speeds and a loss in steering radius. Because of its design, the Spidertrax Panhard Kit follows the natural path of the front axle allowing for maximum articulation.

In addition to controlling lateral stability, the Spidertrax Panhard Kit provides two new u-bolt plates with integrated bump stop mounts. These bump stop mounts are designed to work with the factory chassis mounted bump stops. If adjustment is needed for the height of the chassis mounted bump stop, Spidertrax offers a Bumpstop Kit. Contact your Spidertrax distributor for additional information.

SPIDERTRAX INC. ~ Phone: (800) 286-0898 ~ Web: www.spidertrax.com

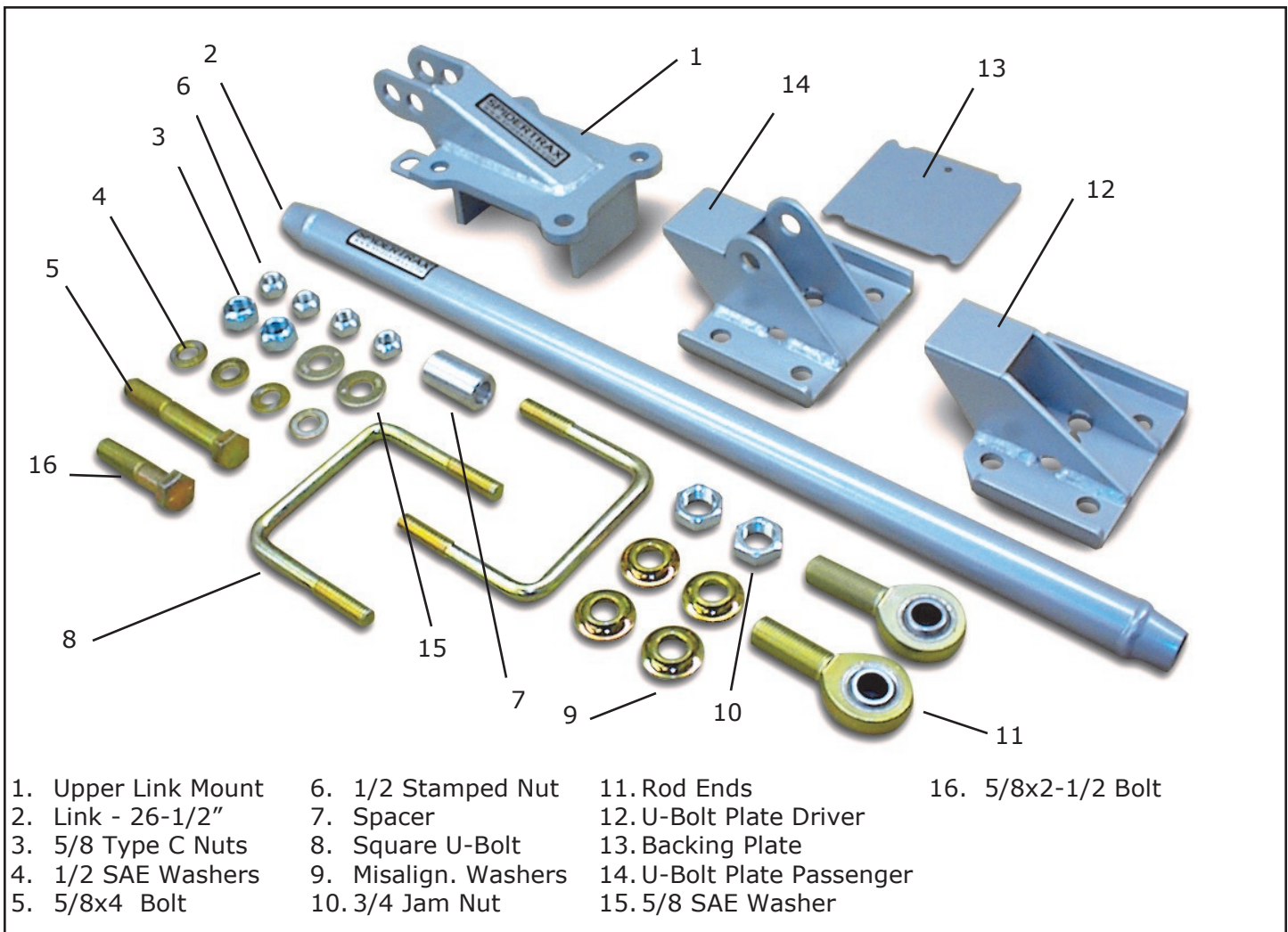


Fig. 1

VEHICLE PREPERATION

1. Park vehicle on level ground and chock rear wheels. Jack front axle and support its underside with jack stands. Remove front wheels from axle.
2. Disconnect drivers side front brake line from caliper brake hose. Be sure to plug end of brake line to prevent brake fluid from escaping.
3. Locate drivers side front brake line tab. Cut tab off from chassis and sand surface flush.



Fig. 2

4. Separate wheel-well skirt from chassis to provide clearance for Square U-Bolt.



Fig. 3

5. Paint bare surfaces to prevent rust.

INSTALLATION

6. Replace OEM passenger side u-bolt plate with Passenger U-Bolt Plate so bump stop platform is inline with bump stop. *Three spring bolt clearance holes are provided in U-Bolt Plate to accommodate a variety of suspension setups. (*Additional comments at end of document).
7. Replace OEM driver side u-bolt plate with Driver U-Bolt Plate so bump stop platform is inline with bump stop.
8. Place Upper Link Mount on chassis and position it so there is 1/16-1/8" gap between Upper Link Mount edge and OEM bump stop mount edge.
9. Tighten Upper Link Mount to chassis using Square U-Bolts, Backing Plate, 1/2 Washers, and 1/2 Stamped Nuts.

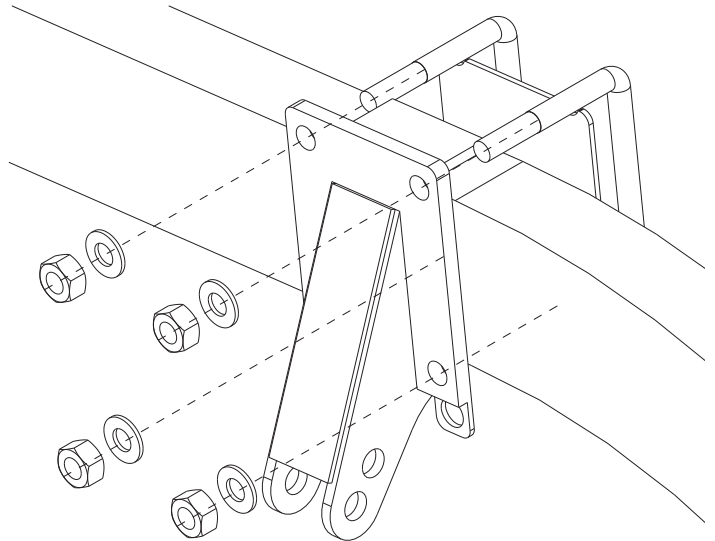


Fig. 4

10. Assemble Link to Passenger U-Bolt Plate using 5/8" Rod End, 3/4" Jam Nut, 5/8x4" Bolt, Misalignment Washers, Spacer, and 5/8" Stamped Nut. Do not tighten 3/4" Jam Nut.

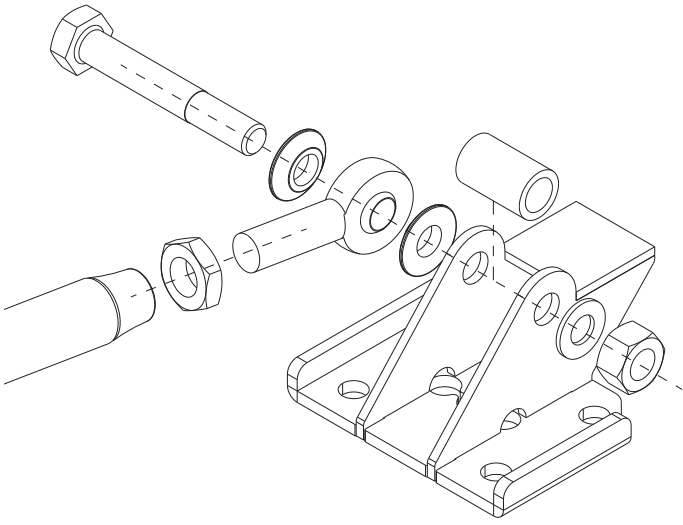


Fig. 5

11. Choose upper link mounting hole in Upper Link Mount so that panhard link will be closest to parallel with drag link. Drag link is link connecting pitman arm to OEM knuckle.
12. Fasten Link to Upper Link Mount using 5/8"

Rod End, 3/4" Jam Nut, 5/8x2-1/2" Bolt, 5/8" Misalignment Washers, 5/8" Stamped Nut and 5/8" Washer. Do not tighten 3/4" Jam Nut.
13. Turn Link so exposed thread on both 5/8" Rod

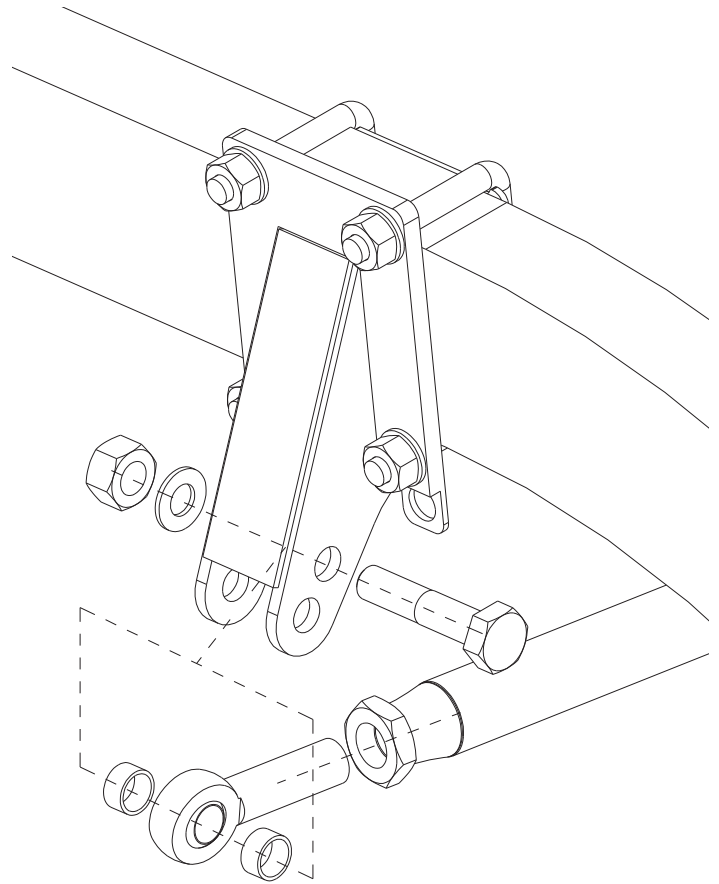


Fig. 6

Ends are equal. Tighten both 3/4" Jam Nuts.
14. Reconnect drivers side front brake line to brake hose using Upper Link Mount integrated brake tab. Reuse OEM spring clip. Bleed brakes per Suzuki specification. Be sure brake hose clears Upper Link Mount.
15. CAREFULLY DRIVE VEHICLE OFF-ROAD TO BECOME ACCUSTOMED TO PAHNARD KIT.

CAUTION
STEERING WILL BE HIGHLY RESPONSIVE WITH PAHNARD KIT INSTALLED.

* Three clearance holes have been added to the u-bolt plates to accommodate a variety of suspension setups. For a typical spring over axle, use the middle clearance hole. If the front axle has been positioned further forward or backward use one of the two offset clearance holes (offset 3/4" from center).