



ANTI-WRAP KIT INSTRUCTIONS

GENERAL DESCRIPTION

The Spidertrax Anti-Wrap Kit (ANW-001) is designed to completely eliminate rear axle wrap. It works by using a single link connecting from a cross member on the chassis to the underside of the axle housing. The dynamics of this kit allows for correct suspension geometry without inducing bind.

The Spidertrax Anti-Wrap Kit comes complete with a crossmember, sideplates, axle tabs, link, and all hardware for the install.

SPIDERTRAX INC. ~ Phone: (800) 286-0898 ~ Web: www.spidertrax.com

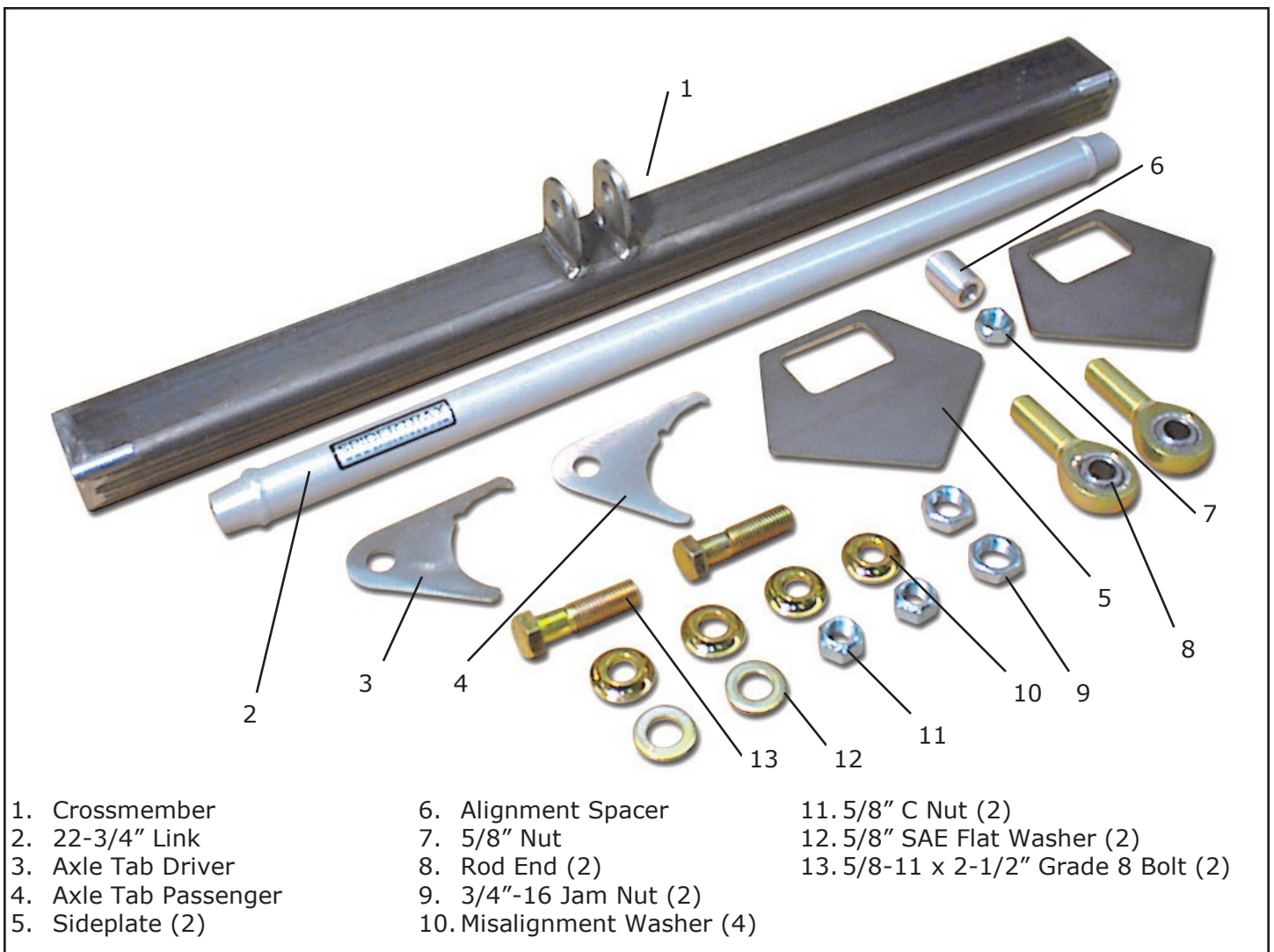


Fig. 1

TOOLS NEEDED

- 15/16" wrench
- 15/16" socket and ratchet wrench
- Welder
- 2 Clamps
- Tape Measure
- Sander
- Marker

INSTALLATION

1. Park vehicle on level ground and chock wheels. **This entire install is done with the vehicle at ride height.**
2. Bolt both Axle Tabs together using 5/8 x 2-1/2" Bolt, Alignment Spacer, and 5/8" Nut. The two small notches on tabs should be aligned. Verify orientation with figure below.



Fig. 1

3. Fit tab assembly to axle housing on **lower driver side** spaced approximately 1" from third member as shown. Small notches in tabs should be aligned with weld on center of axle housing



Fig. 2

4. Noting placement of tabs from step 3, use sander to clean area from paint.
5. Place tab assembly back on **lower driver side** of axle housing and use a tape measure to position tab assembly 1" from third member. Bolt hole on tabs should be below center line of axle housing. Third member does not need to be removed for this install.

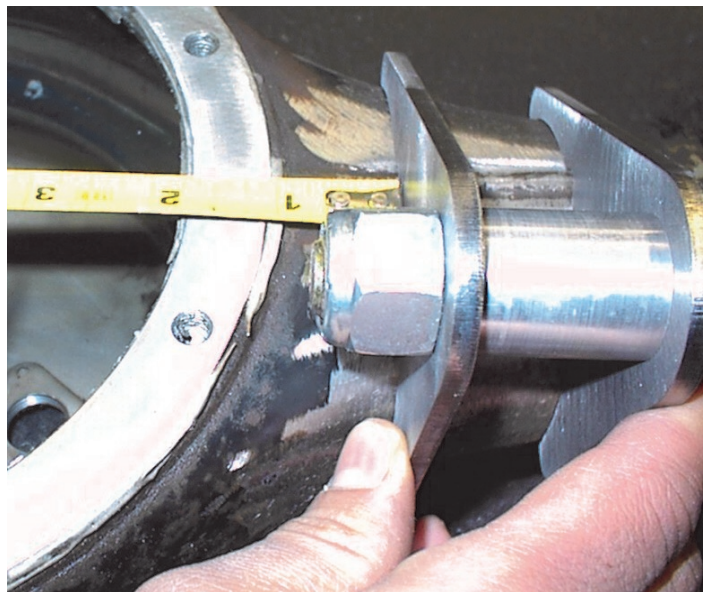


Fig. 3

6. Tack weld tab assembly in place. Verify placement and weld to axle housing. Be sure to make a continuous weld from top to bottom of both tabs. It is a good idea to weld half of each tab at a time and taking a moment for each area to cool. This will avoid overheating the axle housing in one area. Note that overheating axle housing can cause the housing to deform.
7. Assemble link using 3/4-16 Jam Nuts and Rod Ends provided. Adjust Rod Ends so center to center dimension is 26-3/8".

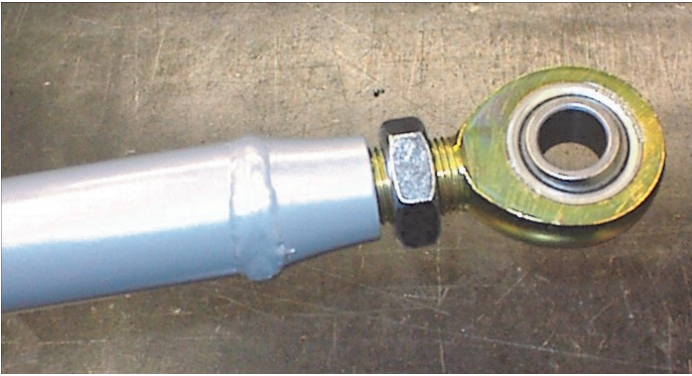


Fig. 4

8. Work Crossmember in place starting from underneath vehicle. Crossmember will sit between body support and spring hanger mount. **Note orientation of tabs as they should face downward and off center toward the drivers side.**
9. Fit Sideplates to either side of crossmember. Position crossmember 4-1/2" forward from spring mount as shown. This dimension is a good starting point for basic SPOA's. For vertical placement, Crossmember should sit against top of frame rail. Be sure Crossmember is level and centralized with sideplates and clamp sideplates to chassis.



Fig. 5

10. Install assembled Link to Axle Tabs and Crossmember tabs but do not tighten hardware. This step is done to verify link length with your suspension. If small adjustment is needed in Link length adjust Rod Ends. If length needs to be adjusted more than 1/4" in each direction modify crossmember dimension from step 9 to compensate (make more or less than 4-1/2"). Once new location is finalized record the new dimension from spring mount (the dimension that was 4-1/2").
11. With Crossmember properly oriented, use a marker to trace position of Sideplates and remove Sideplates from chassis. Sand this area clean for welding preparation.
12. Reinstall Sideplates and Crossmember referring back to the dimension recorded in step 10. Be sure to use the recorded dimension if different from the 4-1/2" dimension. Centralize Crossmember between Sideplates. Tack weld Crossmember to Sideplates and Sideplates to chassis.
13. Before welding Sideplates to chassis, verify Crossmember is in proper position by temporarily installing Link on last time.
14. Weld Sideplates to chassis. Then weld Crossmember to Sideplates on all four sides of Crossmember tubing.
15. Paint all bare components to prevent rust.
16. Install link to Axle Tabs and Crossmember tabs as shown. Use the 5/8" C Nuts. Be sure vehicle is at ride height when installing link.

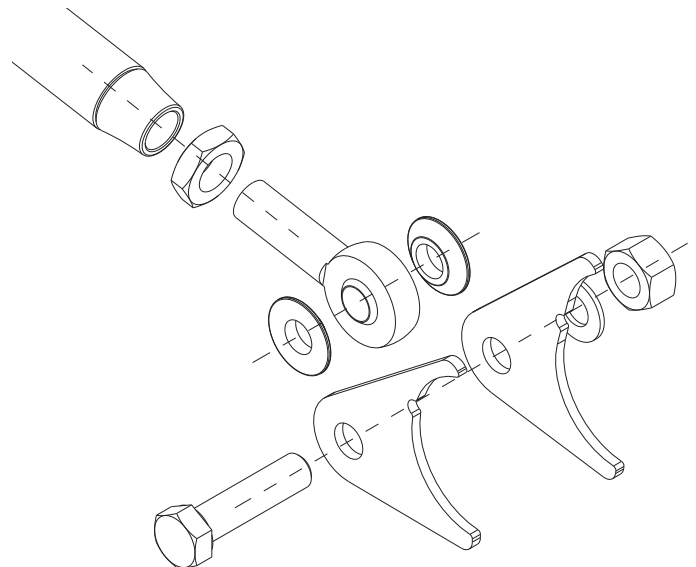


Fig. 6

IMPORTANT!

IT IS REQUIRED THAT REAR AXLE BE TRUSSED TO AVOID DEFLECTION OF HOUSING IN DIRECTION OF ANTI-WRAP BAR LINK. IMAGES BELOW DEMONSTRATE ONE WAY OF ACCOMPLISHING THIS.



Fig. 7