



PowerView™ Model PV780

Operations Manual

In order to consistently bring you the highest quality, full featured products, we reserve the right to change our specifications and designs at any time. The latest version of this manual can be found at www.fwmurphy.com.

Error! Not a valid link.



Please read the following information before installing.

**BEFORE BEGINNING INSTALLATION OF THIS MURPHY
PRODUCT:**

Read and follow all installation instructions.

Please contact FW MURPHY immediately if you have any
questions.

Table of Contents

Table of Contents	iii
PV780 Features and Operations	1
Setting Up your PV780 Display for the First Time.....	2
Product Features.....	4
Power Up	4
Main Menu	4
Gauge Display.....	5
Fault Code Popups	7
User Settings.....	8
Utilities.....	11

(THIS PAGE INTENTIONALLY LEFT BLANK)

PV780 Features and Operations



Flat Screen Display

A color screen displays gauges, soft key commands, and fault messages, as well as menu options for setup and configuration.

Soft Key Commands

Columns of vertical commands may be located to the left and/or right of the display. They will change according to the options available for the screen being displayed.

Function Keys

The function keys correspond to the soft key commands and allow selections to be made accordingly.

MENU Key

Pressing the **MENU** key at any time displays the list of menu options.

ENTER Key

Pressing the **ENTER** key will select the option displayed much like the **ENTER** key on a keyboard. The **ENTER** key also brings up the soft keys. Press once to display the left and right arrows. Press twice to display all the soft keys. Press three times to hide all the soft keys.

Setting Up your PV780 Display for the First Time

The guidelines presented below are intended for setting up the PV780 display for the first time. Once the configuration is set up, there is no need to revisit or change any of the settings.

NOTE: If you require assistance during the set up process, contact FW Murphy customer support at the office nearest to you (see page 16).

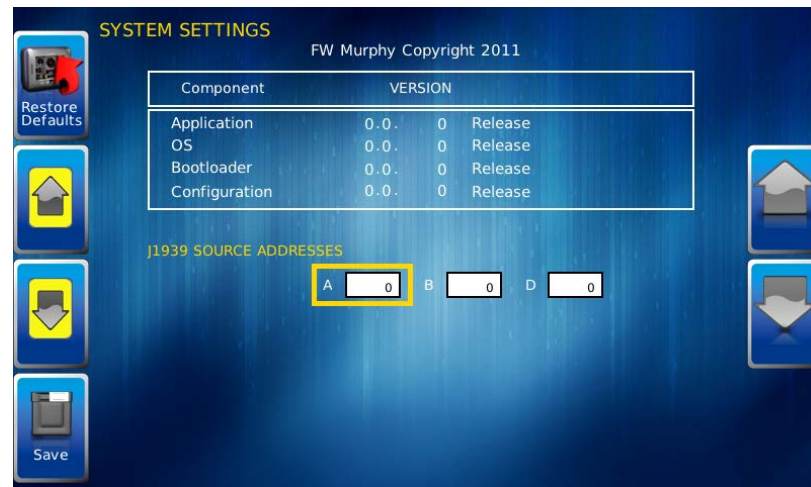
1. At the main menu, press the soft key to the left of Utilities



2. The Utilities sub-menu is displayed.



3. From the 'Utilities' sub-menu, select 'System Settings'. The following screen is displayed



4. With the cursor highlighting the J1939 source addresses, use the left side soft keys to scroll through the ports and the right side soft keys to change the address. Press the Save key to save selected changes or the Restore Defaults key to return to the default settings. The field options consist of the following:

Product Features

Power Up

The PowerView display is most frequently installed with power connected to the ignition. When the ignition is turned on, the PowerView display powers up and the engine health statistics can be viewed via preset gauges.



To see more gauge screens, press the **Enter** key.

Main Menu

The main menu is activated at any time by pressing the **Menu** key on the display.



The following features are accessed through the main menu:

- **Gauge Display** – provides a series of screens that display engine and auxiliary information in a variety of formats.
- **Engine Diagnostics** – displays a list of engine fault codes and descriptions.

- **User Settings** – allows you to customize the display options for ambient light and brightness, set US or metric units, language, specify the Home screen and screen setup status.
- **Utilities** – allows configuration of the plug address. Also displays software version information at the top of the page.

Gauge Display

The Gauge Display screen consists of several predefined layouts that contain combinations of analog gauges, straight bar gauges, or digital (text) readouts. These screens are displayed upon startup.

To scroll through the various gauge screens, press the **Prev** and **Next** soft keys. This can be repeated until all screens have been viewed. The currently displayed screen will stay active until another key is pressed.

Soft Key Commands

When a Gauge Display screen is active, pressing the **Enter** key will display soft key commands, as shown below. Continuing to press **Enter** will toggle through any additional soft keys, and will eventually remove the soft key commands from the screen.



Soft Key commands provide quick navigation and access to the following features:

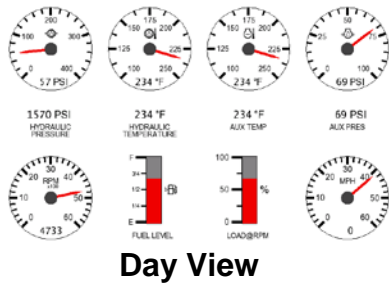
- Home
- Day/Night
- Prev
- Next

Home - This one-touch navigation feature allows a pre-defined Home screen to be accessed from the available Gauge Display screens. Once selected, the Home screen will be displayed anytime the **Home** key is pressed.

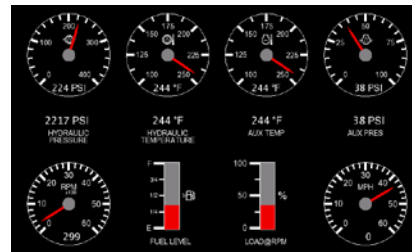
NOTE: For instructions on how to setup the Home screen, refer to the “**User Settings**” section of this manual.

Day/Night - Allows you to toggle the display screen between Day View and Night View.

NOTE: This feature can also be changed in the “**User Settings**”, see this section of this manual.



Day View



Night View

Video – When enabled, displays either full screen video or partial video within a window on the gauge display.

NOTE: For instructions on how to enable full or partial screen video, refer to the “**User Settings**” section of this manual.



Full Screen Video



Example Partial Screen Video

(Video Screen displayed is from custom configuration)

Previous and **Next** keys allow you to scroll through and display the various gauge screens.

NOTE: For instructions on how to turn screens ON or OFF, refer to the “**User Settings**” section of this manual.

Fault Code Popups

A fault condition will trigger a popup dialog box on the screen describing the nature of the fault. Corresponding red or amber fault lights on the corners of the unit are also activated to indicate the severity of the fault. The following screen is an example of warning fault code popup.



How to Hide/Show Faults

To hide the fault code popup being displayed on the screen, press the soft key on the right next to the “Hide” icon. The popup will disappear, however the “Warning” or “Stop” icon will remain on the screen to indicate there is still a fault. Pressing “Hide” does not clear the fault; it only hides the popup message.

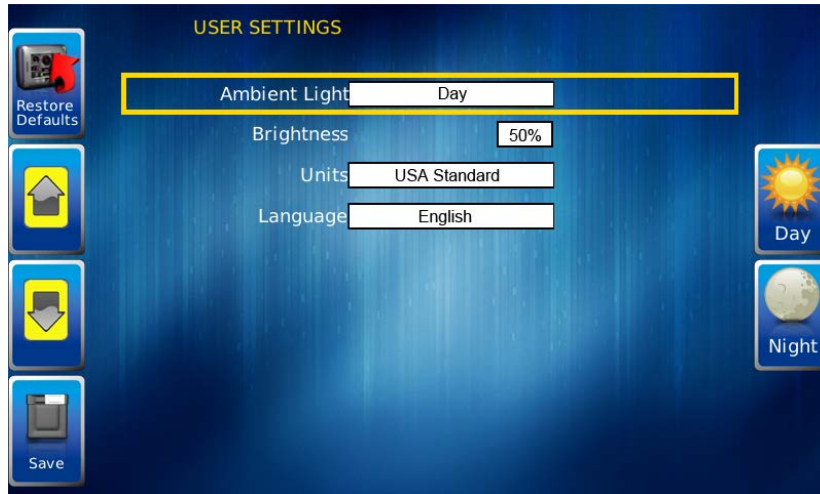
When a fault code has been hidden, a “Recall” icon will remain on the right side. When this soft key is pressed, the fault code will again be displayed. When a popup message has been activated, a pop-up message will be displayed until the alarm is acknowledged by pressing the “Hide” key.

Scrolling Through Multiple Messages

The title-bar of the fault code popup may indicate multiple messages, as in ‘Diagnostic Message 1 of 3. Press the **Prev** and **Next** keys to scroll through the different messages.

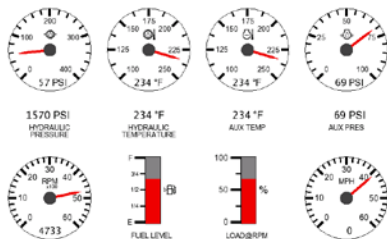
User Settings

User Settings provides options to specify viewing preferences for the PV750 Display. Pressing **Up** and **Down** navigates through the options. To change an option, press the corresponding soft key next to the desired soft key command.



Ambient Light

Night and Day options are provided for ambient lighting. The screens below illustrate these options. When the ambient lighting settings are changed in User Settings, the power-on default is changed.



Day View

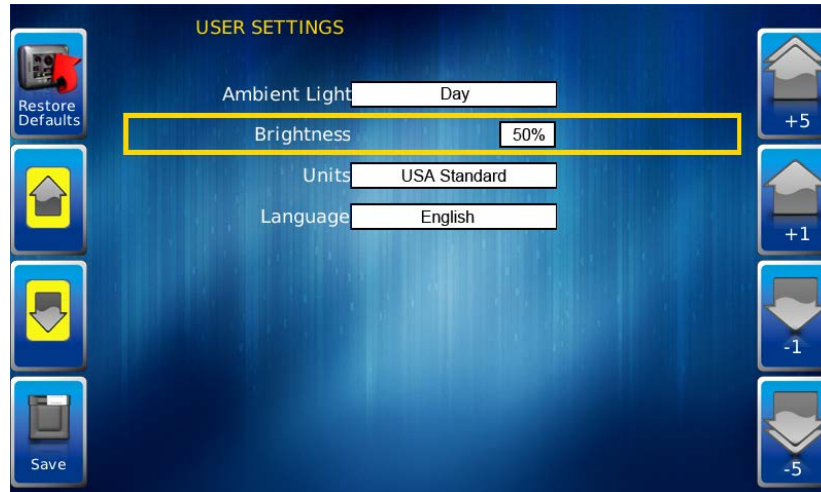


Night View

NOTE: The ambient lighting option is also accessible through soft key commands on the gauge display screens. When selected, the **Day/Night** soft key toggles the display to the opposite mode.

Brightness

You can set the brightness control by using the soft keys to change the settings in +1% and +5% increments until the desired brightness is achieved.

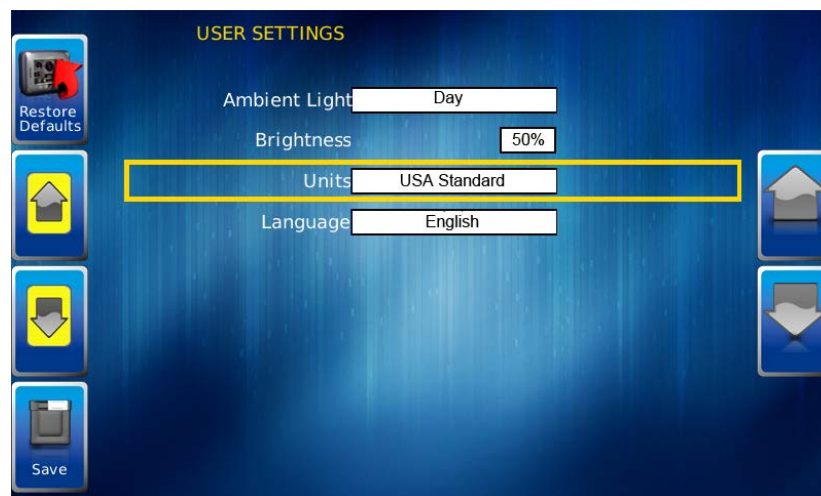


NOTE: Brightness level will change with ambient light setting. Two brightness levels are saved; one for day and one for night.

Units

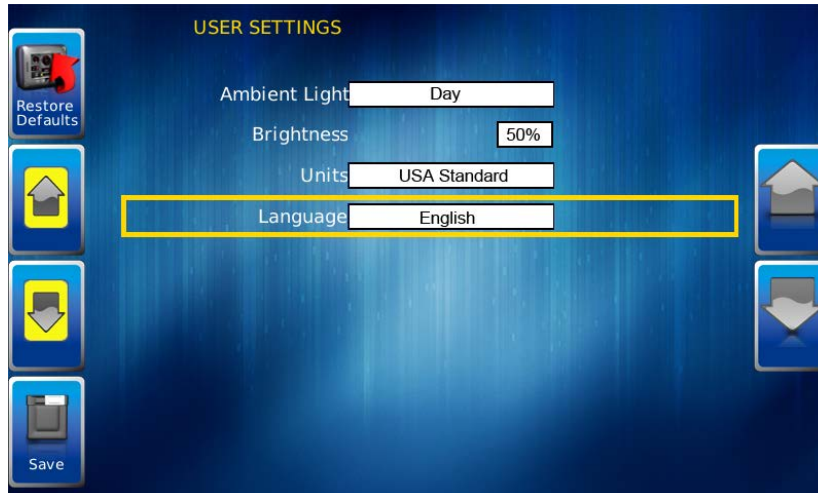
Select how units are displayed by using the soft keys to select from the following:

- USA Standard
- Metric Bar
- Metric kPa
- British Standard



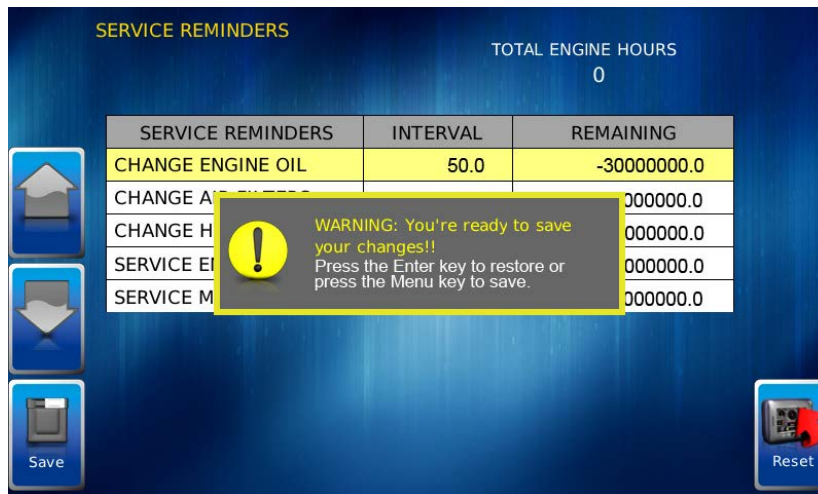
Language

This option allows you to select the language that will be displayed on the PowerView. Available languages include English, French, Spanish, German, Italian, and Chinese. Languages are selected from the soft keys. Press **More** to view additional languages.



Save

Once all changes have been made, press **Save**. The following confirmation screen is displayed.



Restore Defaults

Restore Defaults sets the display to the original factory settings. During troubleshooting, this can be used as a last resort to completely reset the display to a known state.

To restore the default user settings, press **Restore Defaults**. The following confirmation screen is displayed.

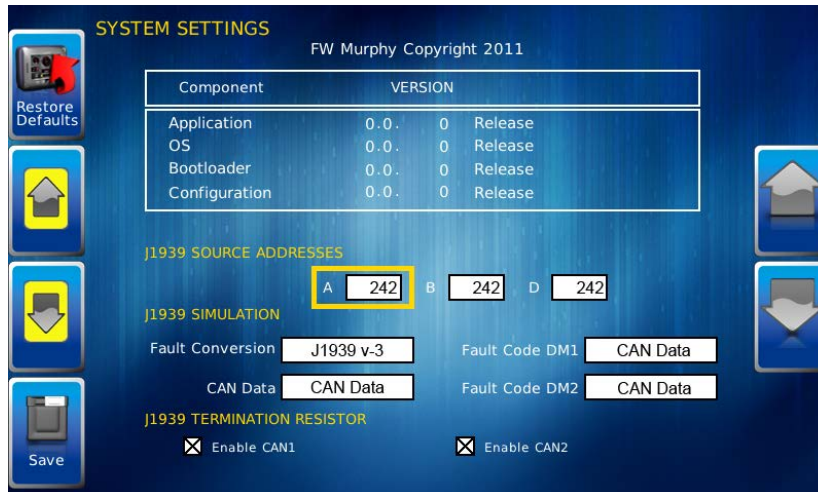
Utilities

Utilities allow you to reset external gauges and configure communication settings. It is typically only accessed when the unit is first installed in order to configure the unit. The following sub-menu is displayed when Utilities is selected.



System Settings

The System Settings screen displays the current software version loaded on the PV750 display. You can set individual settings for the available options and “**Save**”, or choose to select “**Restore Defaults**” for the factory settings.

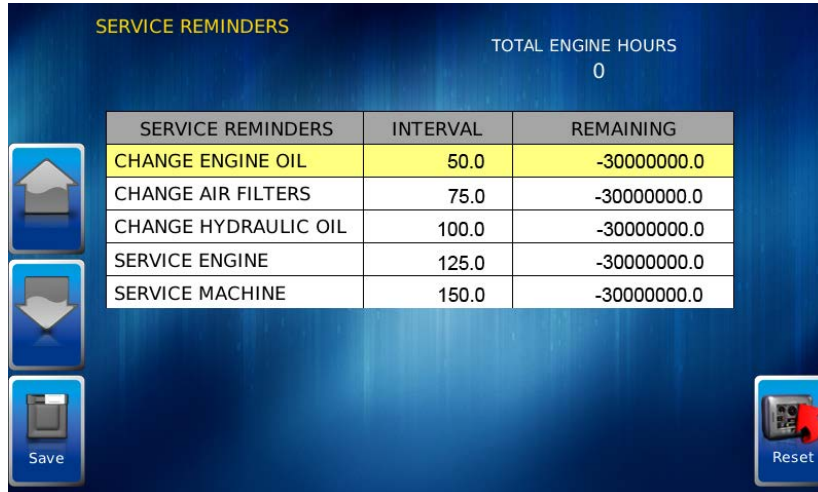


The yellow **Up** and **Down** keys on the left allow you to move the cursor through ‘J1939 Source Addresses’ fields. While the cursor is highlighting a field, the gray **Up** and **Down** keys scroll through available options. Once all the options have been selected, press **Save**.

Service Reminders

This option allows you to reset the 5 built-in service reminders:

- Change Engine Oil – Default interval 50.0 Hrs.
- Chang Air Filters – Default interval 75.0 Hrs.
- Change Hydraulic Oil – Default interval 100.0 Hrs.
- Service Engine – Default interval 125.0 Hrs.
- Service Machine – Default interval 150.0 Hrs.



SERVICE REMINDERS

TOTAL ENGINE HOURS
0

SERVICE REMINDERS	INTERVAL	REMAINING
CHANGE ENGINE OIL	50.0	-30000000.0
CHANGE AIR FILTERS	75.0	-30000000.0
CHANGE HYDRAULIC OIL	100.0	-30000000.0
SERVICE ENGINE	125.0	-30000000.0
SERVICE MACHINE	150.0	-30000000.0

Save

Reset

(THIS PAGE INTENTIONALLY LEFT BLANK)

Error! Not a valid link.

FW MURPHY

5311 South 122nd East Avenue
Tulsa, Oklahoma 74146 USA
Phone: +1 918 317 4100 Fax: +1 918 317 4266
E-mail: sales@fwmurphy.com
Web: www.fwmurphy.com

ECONTROLS, INC

5757 Farinon Drive
San Antonio, Texas 78249 USA
Phone: +1 210 495 9772 Fax: +1 210 495 9791
E-mail: info@econtrols.com
Web: www.econtrols.com

FWM INDUSTRIAL PANEL DIVISION

5311 South 122nd East Avenue
Tulsa, Oklahoma 74146 USA
Phone: +1 918 317 4100 Fax: +1 918 317 4124
E-mail: ipdsales@fwmurphy.com
Web: www.fwmurphy.com

FRANK W. MURPHY, LTD

Church Rd Laverstock
Salisbury SP1 1QZ UK
Phone: +44 1722 410055 Fax: +44 1722 410088
E-mail: sales@fwmurphy.co.uk
Web: www.fwmurphy.co.uk

FW MURPHY INSTRUMENTS (HANGZHOU) CO. LTD

77 23rd Street
Hangzhou Economic & Technological Development Area
Hangzhou, Zhejiang 310018 China
Phone: +86 571 8788 6060 Fax: +86 571 8684 8878
E-mail: apsales@fwmurphy.com
Web: www.fwmurphy.com/company_ch

FW MURPHY (LATIN AMERICA & CARIBBEAN)

Apdo. Postal 2-06, Admon. "Lomas" Cord. Arakán 606-16
Lomas 4th Sección 78211, San Luis Potosí, S.L.P., México
Phone: +1 918 317-2500
E-mail: lasales@fwmurphy.com
Web: www.fwmurphy.com

FW MURPHY INDIA

301, 3rd Floor, Krishna Chambers
11, Galaxy Garden, North Main Road,
Koregaon Park, Pune - 411001, Maharashtra, India
Phone: +91 91581 37633
E-mail: indiasales@fwmurphy.com
Web: www.fwmurphy.com

COMPUTRONIC CONTROLS, LTD

Phone: +44 1722 410055 Fax: +44 1722 410088
E-mail: sales@computroniccontrols.com
Web: www.computroniccontrols.com



USA-ISO 9001:2008 FM 28221
UK-ISO 9001:2008 FM 29422
CHINA-ISO 9001:2008 FM 52385
Registered Facilities



Printed in the USA