

# AutoPlex™

## ELISA & CLIA Workstation

Get the convenient,  
flexible & precise solution for  
ELISA & CLIA automation

> Monobind offers an automated platform for  
managing & running assays.

### Features

- Internal optical ELISA reader, CLIA read in separately sold device through integrated software
- Exceptional performance with Monobind immunoassays
- Simultaneous processing of 1 to 12 analytes with automated work-schedule
- Within assay precision (<4% CV) based on five samples run in duplicate
- Reproducibility of dose response variable (<3% CV) based on adjacent duplicate samples
- Dose response drift (<5% CV) based on three positions in microplate
- Excellent correlation (.99 R) and nearly perfect slope with manual method
- Fast processing rates in single plate design
- On average 50 samples performed per hour with Monobind immunoassay
- Dilutions, possible, dispensing single or multiple reagents
- Two syringe pumps for accuracy, stainless steel probes
- Min and max dispensing volumes 2 µl and 1.95 mL
- Maximum number of specimens 96, up to 44 reagents with standard reagent rack of 27
- Custom reagent rack for Monobind AccuBind and AccuLite kits with easy to read icons

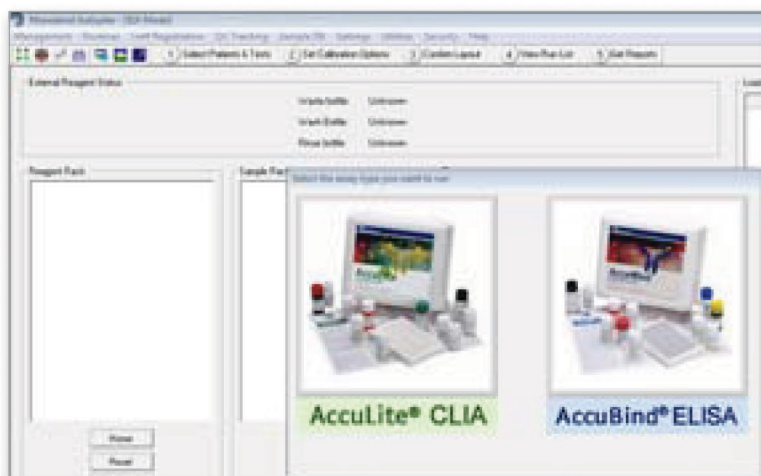
**AutoPlex™ is completely integrated  
with Monobind's immunoassays**

- Programmed with all of Monobind's 45+ tests to allow plug-and-play
- Simply choose CLIA or ELISA mode to access test parameters
- Internal CLIA reader in development
- PC controlled using intuitive Windows® based program
- Versatile, open system
- NRTL Listed, CE Marked

Contact us today to learn more  
[www.monobind.com](http://www.monobind.com) :: [sales@monobind.com](mailto:sales@monobind.com)



AutoPlex shown with optional LuMatic CLIA reader, ask us about package rates.



# AutoPlex™

## ELISA & CLIA Workstation

### > How many different tests (analytes) can I run simultaneously?

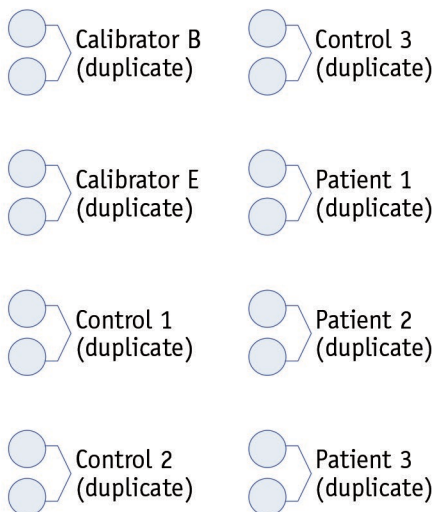
The answer depends on your specific run needs, including the number of patient samples you must measure, calibration options for specific tests (full curve, 2PT curve, or stored curve) and controls to be used. Autoplex operators will have to plan accordingly based on these concerns and stored data from previous runs.

For instance, Monobind advises for 2PT (ELISA or CLIA) or stored curve (ELISA only) that a full calibration curve must be performed, on the same lot of reagents within 30-days otherwise a new, full curve is required. If past data is available in Autoplex, then operators may take advantage of reduced calibration routines.

The greatest number of tests (analytes) possible is 12, based on the microplate reader capability, and the smallest is simply a single test. For all numbers in between, let practical concerns be your guide. Monobind recommends a maximum of 6 tests per run to ensure good laboratory practices. Below we offer the layout for the advised and maximum number of tests.



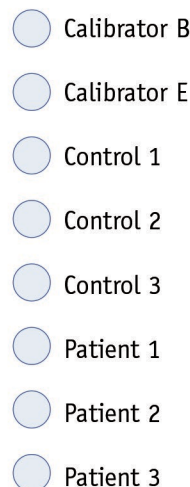
### > Example of 6 Test Plate Format



#### Assumptions

Two Strips Per Analyte  
2PT Calibration in Duplicate  
Tri-Level Control in Duplicate  
Patients in Duplicate  
Three Patients Per Analyte  
= 6 Analytes Per 12 Strips

### > Example of 12 Test Plate Format



#### Assumptions

One Strip Per Analyte  
2PT Calibration in Single  
Tri-Level Control in Single  
Patients in Single  
Three Patients Per Analyte  
= 12 Analytes Per 12 Strips

**Contact us today to learn more**

[www.monobind.com](http://www.monobind.com)  
[sales@monobind.com](mailto:sales@monobind.com)

