



## USER GUIDELINE

Thank you for choosing MOON headlight!

\*For using this product safely and conveniently and keeping it well-preserved, please read this manual carefully before using. Please save this manual for future reference.

\*Due to the improvement of the product, the product you bought may not be exactly in accordance with the introduction of this manual. We apologize for that.

### SPECIFICATION

- \*1 pc CREE XH-G high brightness LED
- \*AA alkaline battery
- \*Water resistant (IPX 4)
- \*5 modes: Standard / High / Over drive / Flashing / Strobe
- \*Quick release handlebar mount (fits 22-31.8mm)
- \*High precision optical lens
- \*Side visibility

### CONTACTS INCLUDED



#### Contents:

- \*NOVA 80
- \*AA alkaline battery
- \*RB-07 (Handlebar bracket)

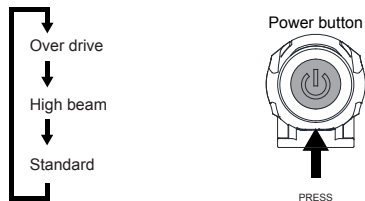
#### Optional accessories:

- \*RB-06 (Helmet mount bracket)

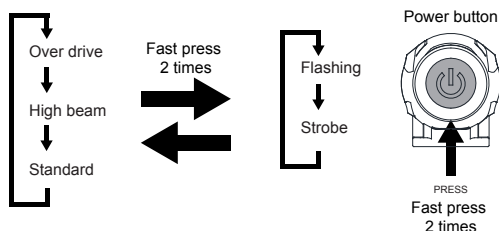
### HEADLIGHT OPERATION

1. Press the power button to choose the modes:

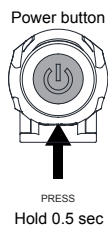
In this method three modes are cycled.



2. Fast press two times the power button to change into the strobe and flashing modes. Fast press two times back to the first cycle.

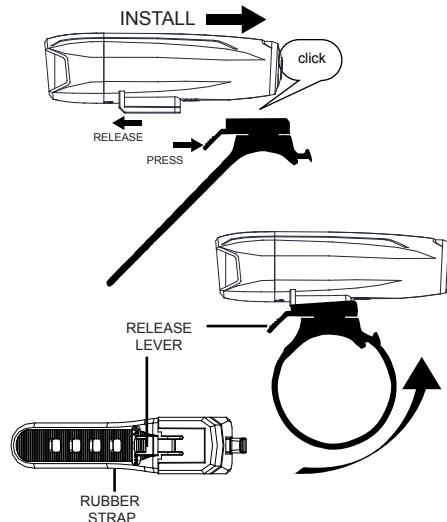


5. Press and hold the on / off button around 0.5 seconds to turn off.



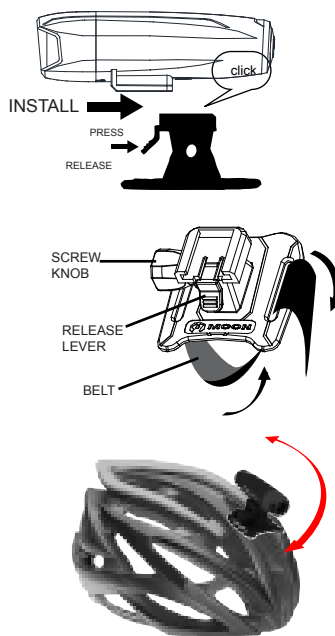
### HOW TO MOUNT THE HEADLIGHT

1. Install the bracket onto handlebar by wrapping rubber strap around post/bar and stretching strap around hook to secure.
2. Slide headlight forward onto bracket until it clicks into place.
3. Press down release lever to remove.



### HOW TO MOUNT THE HEADLIGHT TO HELMET

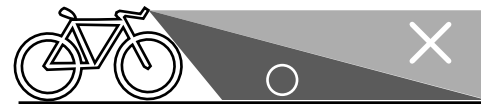
1. Wrap belt around helmet and return the belt onto slotted space.
2. Twist screw knob clockwise until tight.
3. Slide headlight forward onto bracket until it clicks into place.
4. Press down release lever to remove.



To adjust the vertical beam angle when mounted on the helmet, loosen the screw knob and rotate the light up or down to your preferred angle, then tighten the screw knob to secure the light in place.

### BEAM ADJUSTMENT

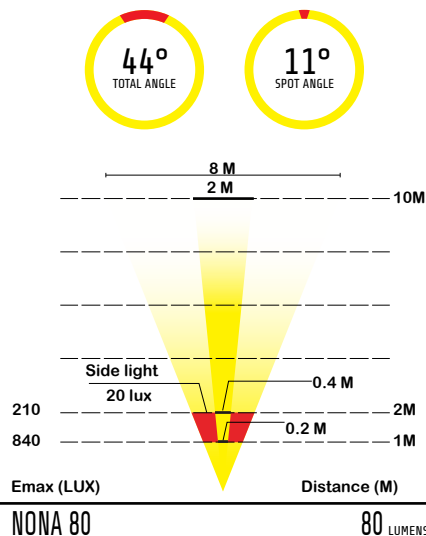
To adjust the horizontal beam, spin the headlight left to right for your best side to side beam angle. To adjust the vertical beam angle, loosen the mounting and rotate the light up and down to your best vertical beam angle, then tighten the mounting.



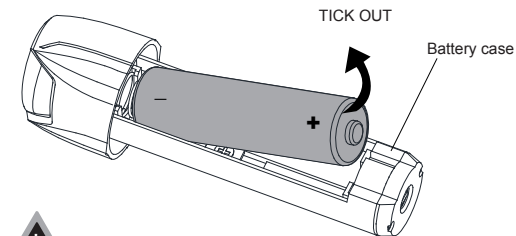
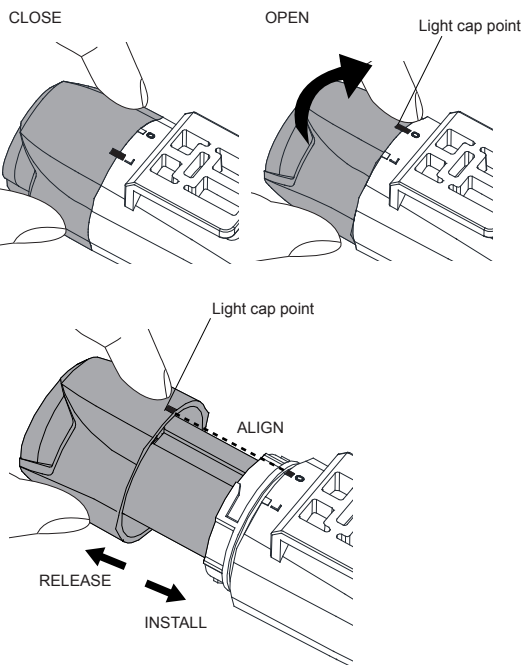
The beam is widely dispersed, besides its high brightness. To prevent from blinding the oncoming vehicles on the public roads, you'd better adjust the angle downward.

### RUN TIME

mode	lumen	runtime	weight
Standard	20	Up to 7 hour 25mins	
High	40	Up to 3 hours 10 mins	
Over drive	80	Up to 1 hours 50 mins	54.8g
Flashing	40	Up to 7 hours 55 mins	
Strobe	40	Up to 7 hours 35 mins	



## HOW TO CHANGE BATTERY



\*Unplug the battery if no use.

### Battery release

1. Slightly twist open the clear lens cover to remove lamp assembly and the battery carriage.
2. Use the finger tickout the battery for replacement.

### Battery installation

1. Carefully install battery as indicated by the orientation diagrams molded in the battery carriage.
2. Align the "point O" to the light cap point. Install the battery case into the light body.
3. Turn right to close the battery door until the "point L" align the light cap point.

**\*Attention:** To maintain smooth battery installation / release, use bicycle friendly grease to lubricate the battery opening and battery o-ring.

## HOW TO CLEAN AND CARE THE LIGHT

\*Make sure to clean the dust and dirt on the light with soft damp cloth after every ride.

\*Water resistant is for rain water only. Do not submerge the battery or the whole light into water when cleaning.

\*Once you start using the light, you'd better keep using it.



**CAUTION:** When riding at night, please follow the guidelines below:

- \*Carrying a flash light is recommended.
- \*Unplug the headlight if no use.
- \*Unplug the battery if no use.
- \*Do not amend or replace any parts with Non-MOON parts.
- \*Do not dismantle the headlight and battery case.
- \*Provide sufficient airflow to the headlight for cooling during use.
- \*Do not control any part of the system under water.
- \*Do not look directly at light.
- \*Do not leave the light on and unattended.
- \*Keep headlight away from fire and combustible materials.
- \*Do not store head unit when hot or straightway after use.
- \*This light is for bicycle use only.

## SIMPLE PROBLEMS ANALYSIS AND SOULUTION

### 1. Problem: The light is not on

Solution: Check if the battery still has power  
Check if the power button is pressed hard  
Check if the battery is installed in place

## WARRANTY

MOON warrants to the original purchaser of this product that the product is free from defects in material and workmanship for a period of one year. This warranty does not apply to damage due to heat, physical damage resulting from abuse, neglect, improper repair, improper fit, or alterations of the fixture. This warranty is in lieu of all other agreements and warranties, general or specific, express or implied and no representative or person is authorized to assume liability on behalf of MOON in connection with the sale and use of this product.

MOON reserves the right to request the return of any product submitted for warranty consideration. All customers should contact the local dealer or regional distributor for warranty service.

To make a claim, first call local dealer or regional distributor. Some issues may be resolved upon the initial call. If return of the product is necessary, please refer to the following instructions:

- \*We recommend that items be sent by a traceable method (such as FedEx or UPS). MOON is not responsible for lost or misdirected packages.
- \*Please include your full contact information (name, address, phone number, and email [if applicable]), and a description of the issue.
- \*Address items to: local dealer or regional distributor

What is not covered: MOON Lights are covered by a ONE YEAR LIMITED WARRANTY from the date of purchase. This covers the lights and cables only. It does not cover the battery or battery internals.

Batteries are covered by 120 days warranty.

For more information please contact us at [cs@moon-sport.com](mailto:cs@moon-sport.com).