



# Heatmiser iPhone App Setup & User Guide

Version 3.0

## **What's New?**

Multi-Zone Support via Multi-Link (WiFi System) and Netmonitor (Network System)

Global Functions including; Key lock, Temperature Hold, Summer Facility, Home/Away

7 Day Temperature Profile (Via Multi-Link Only)

### **Multi Zone Network Hardware Requirements**

Netmonitor Firmware: 3.5 or above.

Touchpad TFT: Running Firmware 3.0 or above.

## **iPhone App Setup**

After you have installed the app on your phone you will need to enter the LAN IP address for local access and the WAN IP if you require a remote connection.

### **Local Connection Setup**

Depending on the system you have, you should have first setup your WiFi Thermostat, Multi-Link or Netmonitor.

Now enter the IP address of your WiFi thermostat, your Multi-Link or Netmonitor in order to connect to your system.

Note: Your phone will need to be connected to the same network as your WiFi thermostat in order for the local connection to work. This

connection method is the one to use whilst you are at home for example.

## Single Room or Multi-Room

The app will detect how many rooms are on the system and will either populate a dashboard or simply present a single thermostat view.

For those with a multi-room system, you can select any room by tapping the room square.

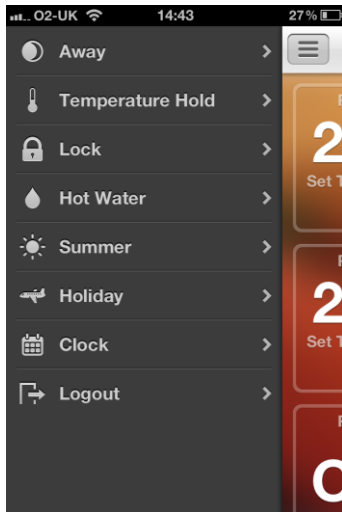


# Functions

## Lock / Unlock

You are able to lock or unlock your thermostat from the individual zone screen by pressing the toggle.

Or for those with a multi-room system, you can press the Global Tab and lock multiple rooms at the same time.



Locking the thermostat will restrict access to the thermostat. A padlock icon is displayed to indicate your thermostat is locked.

## Set Heating Times (Programmable models only)

This function allows you to edit the heating, and if your thermostat is a hot water model, the hot water times too.

Your thermostat can be setup to work in 2 modes.

Weekday/ Weekend mode (the weekdays are all the same but the weekend is different) or

7 Day mode (where every day is different)

The App will update depending on the setup of your thermostat.



## Temporary Temperature Change

You can manually change the set temperature by using the scroll wheel. This temperature will be maintained until the next programmed setting. Once you have selected the desired temperature, press Apply to send this temperature to your thermostat.

## Hot water Toggle (Hot water model only)

A toggle is displayed on screen allowing you to quickly override the hot water on or off. This setting will be maintained until the next programmed setting.

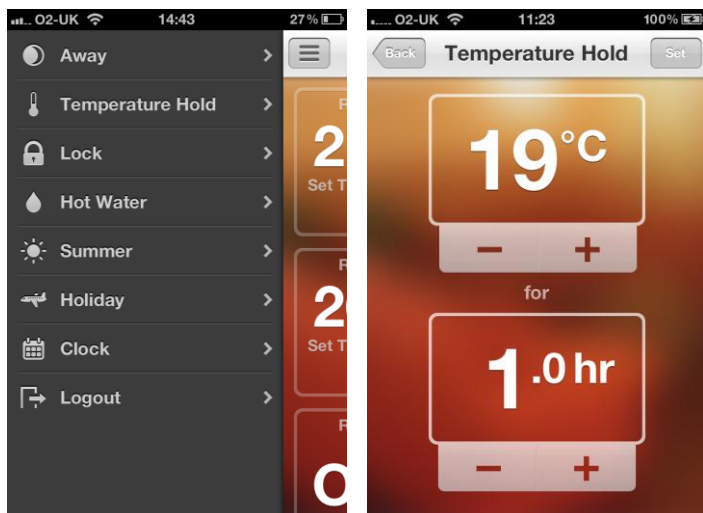
## Copy

A copy facility is provided to those with multiple rooms, enabling you to copy between rooms. Only rooms of the same type can be copied.

## Temperature Hold Function

You are able to hold a temperature from the individual zone screen, or for those with multi-room systems, you can press the Global Tab and hold the temperature for a number of rooms. The temperature hold function is ideal for parties or other unscheduled use of the system. A temperature can be held for a certain duration, after which the thermostat will revert back to the programmed setting.

To cancel a hold setting early, simply return to the hold screen and reduce the hours to 0.0

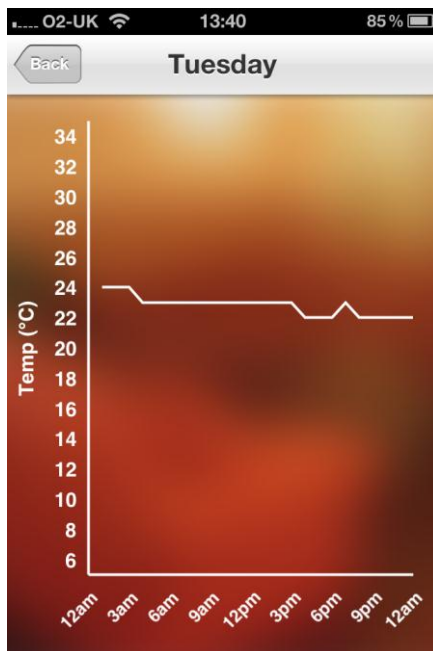


## History (Only available to those with Multi-Link)

The Multi-Link stores 7 days temperature history for each thermostat on the system. This data is displayed in a line graph, and is an ideal way to view the temperature profile for your home.

## Hours Run

The previous 12 months hours run data can be viewed giving an excellent overview of your energy usage.



## Home / Away Function

This feature gives you a simple way for turning off your heating system whilst you are away. On your return, cancelling the Away function will re-enable the system - ideal when you have a holiday home and are not sure when you will return.

You are able to set the temperature that will be maintained during the Away period. This can be adjusted from 07-17C

## **Holiday Function**

The holiday feature enables you to put the heating system into frost mode whilst you are away. At the end of the holiday, your system will revert back to the programmed time, ensuring your home is warm on your return.

To cancel a holiday early, simply return to the hold screen and press cancel.

## **Summer Function (HW models only)**

This function enables you to turn the heating off whilst leaving the hot water to operate as normal - ideal for the summer period.

For technical assistance in the operation or setup of this app, please contact us by any of the following methods.

## **Set Back**

This function turns the heating output off (frost protection), for HW & Timeclock models the hot water output will also be turned off.

## **Clock**

Setting the clock on the App will set the clock on all of the thermostats and Netmonitor/Multi-Link.

## **Heatmiser UK Ltd**

Tel: 01254 669090 email: [support@heatmiser.co.uk](mailto:support@heatmiser.co.uk)